

# SPANISH-AMERICAN INSTITUTE

established 1955

(The Institute Foundation, Inc.)



Accredited By  
The Commission On  
English Language  
Program Accreditation  
(CEA)

AUTHORIZED UNDER FEDERAL LAW TO ENROLL NON-IMMIGRANT ALIEN STUDENTS

## SCHOOL CATALOG (with student policies and procedures)



After The Faculty Professional Development Meeting --- Getting Ready For "Idea Exchange" Luncheon! - December 2018

A Not-For-Profit, Equal Educational Opportunity Language School

240 West 35 Street ● Manhattan ● New York 10001

Voice: 212.840.7111 ● fax: 646.766.0302 ● info@sai.nyc ● www.sai.nyc

**Student Services WhatsApp: 917-328-2815**

wireless internet "Wi-Fi Hotspot" throughout!

<http://facebook.com/SpanishAmericanInstitute> SKYPE: "StudentClub"

Dante V. Ferraro, President

Paul Schiffman, Dean of Students

Frank J. Ferraro, Founding Director (d. 2005)

David Schiffman, Founding Director (d. 2016)

Robert Connelly, Dean of Students, 1970-2006, (d. 2021)

volume 34 / Summer 2024

04/08/2024 5:30:16 PM printing

# TABLE OF CONTENTS



## **I. ABOUT THE INSTITUTE** **5**

President's Welcome .....	5
Mission Statement.....	5
History of the Institute .....	5
Location and Directions .....	5
Description of Facilities .....	6
Instructional Equipment.....	6
Method of Instruction.....	6
School Approvals.....	6
Accreditation.....	6
CEA.....	6
School and Faculty Affiliations .....	7
Legal Control .....	7
Administration.....	7
Student Services Associates.....	8
Faculty Student-Services Associates.....	8
Faculty Chairs .....	9
Faculty.....	9
Advisory Board .....	11
Catalog Disclaimer.....	11
College Credit – Disclaimer Statement.....	11
Statement of Policy on Discrimination .....	11
Recordkeeping Policy .....	11
STUDENT RECORDS.....	11
FACULTY AND STAFF PERSONNEL FILES.....	11



## **II. STUDENT SERVICES** **12**

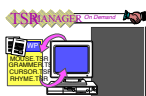
Guidance .....	12
Substance Abuse .....	12
Transfer Counseling.....	12
Library/Learning Resources.....	12
Student Lounge .....	12
Student ID Card.....	12
Bookstore Commissary .....	12
Housekeeping.....	13
Complaint Procedures .....	13
Online Complaint Resolution Form.....	13
Internet Access .....	13
Smoking Policy .....	13
Food Consumption Policy.....	13
Student Code of Conduct .....	13
Suspension/Termination For School-Rule Violations .....	13
Student/Faculty Campus Security Report.....	14
Student Housing.....	14
Medical Insurance .....	14
IMPORTANCE OF HEALTH INSURANCE.....	14

“WHY HEALTH INSURANCE IS IMPORTANT”	15
NEW YORK STATE HEALTH PLANS:	15
WHERE DO YOU GET HEALTH INSURANCE?	15
GLOSSARY OF HEALTH INSURANCE	15
Policy on Dissemination of Information .....	15
Student Adjustment To Culture And Community .....	15



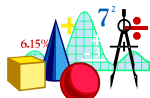
### III. ESL-PLUS REQUIREMENTS FOR F-1 STUDENT VISA APPLICANTS 15

ESL-Plus Requirements for F-1 Student Visa Applicants (1920 hours).....	15
F-1 Student Visa SEVIS Record .....	15
Information Regarding The Maximum Times A Class Can Be Repeated.....	16
Impact of Repeating Classes on Immigration Status .....	16



### IV. COURSE DESCRIPTIONS 16

200 English Keyboarding For Information Processing (48 hour cycles*).....	16
201 English for Keyboarding (Basic Course) (120 hour cycles*) .....	17
202 English For Keyboarding (Advanced Course) (120 hour cycles*).....	17
203 English For Keyboarding (Expert Course) (80 hour cycles*) .....	18
235 English For Introduction to Word for MAC (80 hour cycles*) .....	19
300 English For Business Management (120 hour cycles*).....	19
302 English For Accounting (First Course) (120 hour cycles*).....	20
303 English For Accounting (Intermediate Course) (120 hour cycles*) .....	21
304 English For Accounting (Advanced I) (60 hour cycles*) .....	22
305 English For Accounting (Advanced II) (60 hour cycles*).....	22
404 Business Communications (72 hour cycles*) .....	23
500 English Literacy (120 hour cycles*) .....	24
501 English As A Second Language I-VI (120 hour cycles* [each level]) .....	25
502 Business English (120 hours cycles*).....	30
503 Advanced Reading & Writing (120 hour cycles*).....	31
604 English For TASC Preparation (formerly High School Equivalency Diploma Preparation) (240 hour cycles*) .....	32
605 Pre-GED Foundation for GED Preparation (80 hour cycles*) .....	33
610 English For TOEFL Exam Preparation (80 hour cycles*).....	34
940 English for Introduction to Word for MAC 80 hour cycles*.....	35
950 English For Using Excel (80 hour cycles*) .....	36
955 English For Using the Internet (80 hour cycles*) .....	37
965 English For Using Microsoft PowerPoint (80 hour cycles*).....	38
975 English For Using Adobe PhotoShop (160 hour cycles*) .....	39
990 English For Introduction to the MAC (80 hour cycles*) .....	40
995 English For Switching to the Mac 80 hour cycles* .....	41
1000 English For Using Apple iMovie 80 hour cycles*.....	41



### V. ADMISSIONS & FINANCIAL AID 43

Admissions Requirements.....	43
Admissions Procedures .....	43
Advanced Standing .....	43
Transfer Of Hours .....	43
Limits of Study for B-2 Nonimmigrants.....	44

Student Visa Applications (Form / I-20).....	44
Financial Assistance.....	44
Waiver Criteria.....	44
Refund Policy.....	45
Enrollment Agreement.....	46
Tuition.....	46



**VI. ACADEMIC POLICIES 46**

---

Office Hours.....	46
Student Program Card.....	46
Program Changes.....	46
Attendance And Tardiness.....	46
F-1 Student Visa SEVIS Record.....	47
Textbooks And Materials.....	47
"Fair Use" Duplication of Copyrighted Classroom Material Guidelines.....	47
Homework.....	47
Make-Up Assignments / Tests / Academic Dismissal.....	47
Dress Code.....	48
Leave of Absence.....	48
Grading Scale.....	48
Maintaining Satisfactory Progress.....	48
Effect on Satisfactory Academic Progress for Transfer Hours.....	49
Effect on Satisfactory Academic Progress of Additional Credential.....	49
Grade Reporting Procedures.....	49
Academic Warning and Probation.....	49
Interpretation of the Achievement Scale.....	49
Assessment Procedures Used To Determine ESL Placement.....	49
Assessment Procedures To Determine ESL Level-To-Level Progression.....	49
Assessment Procedures To Determine Completion Of ESL-Plus.....	50
Bi-Monthly Individual Reports of Results.....	50
Appeal Procedures.....	50
ACADEMIC WARNING / PROBATION APPEAL PROCEDURE.....	50
GRADE APPEALS PROCEDURES.....	50
Course Certificates of Completion.....	50
Academic Year.....	50
Academic Calendar.....	51
Class Hour Schedule.....	51
Instructional Hour.....	51
Course of Study Requirements for F-1 ESL-Plus Student Visa Applicants....	52
Ask For Special "Summer" Upgrade - All Year Long!.....	52
List of Courses.....	54
*Method of Instruction.....	54
Information Regarding Maximum Number Of Times A Class Can Be Repeated	54

**VII. STUDENT CLUB NOTES 55**

---

• Free and Low Cost Gyms, Health Clubs and Pools.....	55
Manhattan Recreation Centers.....	55
Free Flu, Tetanus, Pneumococcal, Hepatitis B Shots.....	56
"English through the Arts" ~ Request for Proposals.....	57

# I. ABOUT THE INSTITUTE



## *President's Welcome*

Welcome to the Spanish-American Institute! We are proud that since 1955 the Institute has contributed to the educational advancement of over 100,000 students from all over the world. While educational needs have changed greatly over the decades, the Institute remains dedicated to the success of New York's foreign-born students. The Institute offers students opportunities to study English language at a variety of levels as well as in context with a variety of fields including Accounting and Computer Applications. English for Specific Purposes computer applications courses include Word Processing, Excel, Access, and PhotoShop among others. Graduates are awarded Certificates of Completion.

We offer day and evening courses five days a week from 9:15 a.m. to 9:14 p.m. so that students can take classes that fit their schedules. As you review this catalog, you will learn even more about the Spanish-American Institute. If you would like additional information, please call or visit and tour our facilities. The office at 240 West 35 Street, New York 10001, 212-840-7111, is open for information, registration, and guidance from 9 a.m. to 9 p.m., Monday through Friday.

## *Mission Statement*

The Spanish-American Institute's mission is to provide effective English language skills training to individuals.

### • **Philosophy -**

The Institute believes that students are more likely to begin and to successfully complete English language training when English For Specific Purposes courses ([i.e. courses in other areas that are premised on language learning while having other content](#)) are combined with ESL-Only courses.

**Objectives** -The Institute implements this philosophy through:

- the establishment and maintenance of an effective faculty,
- the development of English For Specific Purposes business and computer courses as well as traditional ESL only courses., and
- the integration of a varied English as a Second Language course sequence.

The "Plus" courses of the ESL-Plus Course of Study have been reviewed within the context of English for Special Purposes (ESP) methodology and pedagogy. The curriculum components for the ESP courses have goals, objectives, and student learning outcomes that are **premised on language learning while having other content.**

## *History of the Institute*

The Spanish-American Institute was founded in 1955 by Frank J. Ferraro, President, and David Schiffman, Vice President. In 1996, it was donated by their successors to The Institute Foundation, Inc., a not-for-profit, equal educational opportunity institution.

## *Location and Directions*

The Spanish-American Institute is located in the heart of New York's Garment and Fashion Districts. Just down the block from Macy's, Madison Square Garden and Penn Station. 34<sup>th</sup> Street has an Express Stop on nearly every subway line!

**By Subway.** The A, B, CC, D, E, F, SS, N, RR, 1, 2, 3, and 7 subway lines have stops at nearby. The 4, 5, and 6 East Side trains connect through Times Square from Grand Central Terminal by the SS "Shuttle".

**Local Bus Service.** Numerous City buses stop at Herald Square.

**Express Bus.** Many areas outside Manhattan are served by private and City express buses, all of which make stops at or near Penn Station and the Port Authority Bus Terminal.

**From New Jersey.** The Institute is a short walk from the Port Authority Bus Terminal which serves neighboring New Jersey towns.

**By Car.** While parking is available at area garages and some students "car-pool" with family and friends, mass transit offers such abundant, varied and inexpensive transportation that few choose to drive.

### ***Description of Facilities***

The Institute moved to its present custom-designed, fully air-conditioned facility on the second floor at 240 West 35 Street, Manhattan in 2016, after 48 years at 215 West 43 Street. The administrative offices, guidance offices, bookstore, student lounge, computer room, and classrooms are easily accessible to each other. The Institute is wheelchair accessible. Every effort will be accommodate people with special needs. For additional information, please contact the Dean of Students at (212) 840-7111.

### ***Instructional Equipment***

Computer, keyboarding, accounting, Internet, and TOEFL students have access to modern computer equipment, software, and printers. English language classes have weekly access to mobile TV/DVD and daily access to CD players for audiovisual language learning and reinforcement.

### ***Method of Instruction***

- The Institute is a clock-hour, continuous enrollment institution. All courses and programs are designed so that students can enroll in any class at any time during the year and progress systematically through each class. Students are tested regularly and must pass required tests to maintain good academic standing.
- New students are admitted to classes on the second Monday of each month. When the second Monday is a school holiday, new students are admitted on Tuesday. Exceptions may be made upon consultation with the Dean of Admissions.
- All courses are designed to be repeated in multiple, continuous, course-hour cycles that allow students to review and recycle in a non-linear manner toward proficiency progression of course stated outcomes & student personal proficiency goals as determined in consultation with Student Services Associates.

### ***School Approvals***

The Spanish-American Institute is authorized under federal law to enroll non-immigrant, alien students. Prospective students and their parents may review school accreditation documents by contacting the President for an appointment at 212-840-7111.

### ***Accreditation***

**CEA**

#### **Commission on English Language Program Accreditation**

The Commission on English Language Program Accreditation (CEA) was founded in 1999 by English language professionals as a specialized accrediting agency. The purpose was to provide a means for improving the quality of English language teaching and administration through accepted standards. CEA conducts accreditation reviews in the U.S. and internationally.

In September 2003, CEA was recognized by the U.S. Secretary of Education as a national accrediting agency for English language programs and institutions. This recognition gave CEA the distinction of being the only specialized accrediting agency for English language programs and institutions in the U.S. In December 2005, the Commission expanded its mission to include the accreditation of English language programs and schools outside the U.S.

The ESL-Plus Course of Study at the Spanish-American Institute was accredited by CEA in December 2012.

You can learn more about CEA on their [website: http://cea-accredit.org/about-cea](http://cea-accredit.org/about-cea) . There you will also find the [standards for CEA accreditation: http://cea-accredit.org/about-cea/standards](http://cea-accredit.org/about-cea/standards) and a CEA complaint form.: <http://cea-accredit.org/about-cea/complaints>



## CERTIFICATE OF ACCREDITATION

This certificate acknowledges that

### Spanish-American Institute

*is in compliance with the*

*CEA Standards for English Language Programs and Institutions*


*and is accredited by*

*the Commission on English Language Program Accreditation*

*for the period December 2018 through December 2027.*



Cindy Ochoa  
Chair 2018



Mary Reeves, Ph.D.  
Executive Director

Commission on English Language Program Accreditation  
1001 North Fairfax St., Suite 630, Alexandria VA 22314

### ***School and Faculty Affiliations***

Institute administration, or faculty maintain affiliations with many community, civic, and educational organizations including:

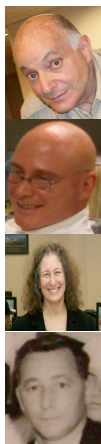
Teachers of English as a Second Language Association (TESOL)

NAFSA: Association of International Educators

### ***Legal Control***

The Institute Foundation, Inc., a not-for-profit New York corporation established in 1995, owns the Spanish-American Institute. Its officers are Dante V. Ferraro, President/Treasurer and Paul Schiffman, Vice President/Secretary.

### ***Administration***



Dante V. Ferraro, President/PDSO  
BA, Fordham  
[dvf@sai.nyc](mailto:dvf@sai.nyc)

Paul C. Schiffman, Dean of Students/DSO  
BS Ed., Hofstra University  
[paul@sai.nyc](mailto:paul@sai.nyc)

Caryn T. Davis, Dean of Academic Affairs,  
MA, TESOL, New School; BA, Hunter College  
[caryn.davis@sai.nyc](mailto:caryn.davis@sai.nyc)

Frank J. Ferraro, Founding Director (d.2005)  
MA, New York University



David Schiffman, Founding Director (d. 2016)  
MA, New York University



Robert Connelly, Dean of Students Emeritus (d. 2021)  
BA, Farleigh Dickinson University

***Student Services Associates***



Nhora Aguilera Student Services Associate



Francina Gomez Student Services Associate



Ingrid Tatiana Garnica Alarcon Student Services Associate



Aurelle Hounkonnou Student Services Associate



Renata Karatayeva Student Services Associate



Ella Krivova Student Services Associate



Ildelisa Lopez Student Services Associate/DSO  
[ildelisa@sai.nyc](mailto:ildelisa@sai.nyc)



Ana Desiree Maldonado Student Services Associate  
[desiree@sai.nyc](mailto:desiree@sai.nyc)  
2017-2020 Artist-in-Residence



Brandon Pena Barrero Student Services Associate



Ana Dolores Ramirez Abru Student Services Associate



Tania Salcedo Student Services Associate

***Faculty Student-Services Associates***



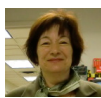
Rasha Abdelrasol  
[rasha@sai.nyc](mailto:rasha@sai.nyc)

**Degree/Institution Awarding Degree**

BA, University of Alexandria

**Teaching Specialization**

Faculty Student-Services Associate  
Accounting



Dr. Dilyara  
Engulatova

Ph.D., Institute of Philosophy and Law of the  
Academy of Sciences of Uzbekistan  
BBA in Accounting, Tashkent Institute of  
Railway Engineering

Faculty Student-Services Associate



Ivelisse Rymer  
[ivelisse@sai.nyc](mailto:ivelisse@sai.nyc)

MS, Accounting, Touro College, NYC  
BS, Univ. Autonoma Santo Domingo

Faculty Student-Services Associate/DSO





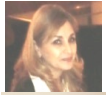
Natlya Tomskikh  
[natalya@sai.nyc](mailto:natalya@sai.nyc)

**Degree/Institution Awarding Degree**

MS, TESOL, Touro University

**Teaching Specialization**

Faculty Student-Services Associate



Irina Zatulovski  
[irina@sai.nyc](mailto:irina@sai.nyc)

BS, Tashkent Institute of Highway  
Engineering

Faculty Student-Services Associate



Bienvenue Zoma

Faculty Student-Services Associate

**Faculty Chairs**



Freddie Ann Bush  
[freddieann@sai.nyc](mailto:freddieann@sai.nyc)

**Degree/Institution Awarding Degree**

MS, Hunter College  
BS, North Carolina A&T

**Department**

Business Chair



Enrique Nibeyro  
[enrique@sai2000.org](mailto:enrique@sai2000.org)

MS, Information Systems: Network Administration & Security  
Touro College, NYC  
BS, MS, Argentine Catholic Pontifical University

Computer Studies Chair

**Faculty**



Galyna  
Andryushchenko

**Degree/Institution Awarding Degree**

BS, Vinnitsa State Pedagogical Institute

**Teaching Specialization**

English as a Second Language



Jenny Arbai  
[jenny@sai.nyc](mailto:jenny@sai.nyc)

BS, Triskati School of Management

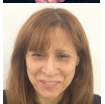
English as a Second Language



Gabriel Avila

BA, Baruch College

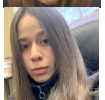
English as a Second Language



Naomi Avraham  
[naomi@sai.nyc](mailto:naomi@sai.nyc)

MA, Psychology, Teachers College, Columbia  
University  
BS, Lesley University

English as a Second Language



Yeisa Carolina  
Borrero

BS, Universidad Jorge Tadeo  
Bogota, Colombia

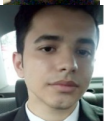
English as a Second Language



Freddie Ann Bush

MS, Hunter College  
BS, North Carolina A&T

English as a Second Language



Furkan Cagril

BS in Education  
Alanya Alaaddin Keykubat University

English as a Second Language



Vedat Cingozler  
[vedat@sai.nyc](mailto:vedat@sai.nyc)

TESOL Certificate, Hunter College  
BA, International Relations, Cag University, Turkey

English as a Second Language



Ana M. Diaz

BS, Univ. Autonoma Santo Domingo

Computer Applications  
English as a Second Language



Gladys Diaz

BS, Univ. Autonoma Santo Domingo

English as a Second Language



Iliyana Dimitrova  
[iliyana@sai.nyc](mailto:iliyana@sai.nyc)

BEEd., University of Velikotarnova, Bulgaria

English as a Second Language



Apler Duru

BA in English Language Teaching  
Alanya Alaaddin Keykubat Üniversitesi

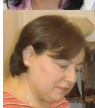
English as a Second Language



Loreen Dolina Ruck  
[loreen@sai.nyc](mailto:loreen@sai.nyc)

BSN, United Medical Center College of Nursing

English as a Second Language



Fatma Duzgan  
[fatma@sai.nyc](mailto:fatma@sai.nyc)

BS, Istanbul University

English as a Second Language



Dr. Dilyara  
Engulatova

Ph.D., Institute of Philosophy and Law of the Academy of Sciences of  
Uzbekistan  
MA, Tashkent State Institute of Transportation  
BBA, Accounting, Tashkent Institute of Railway Engineering

*"English through the Arts"*

Coordinator and Accounting



Gina Garcia

BA, University of Pamplona, Colombia  
Foreign Language Teaching: English & French

English as a Second Language



Jonathan Grass

BA, Universidad Industrial de Santander  
Foreign Languages Teaching with Emphasis in English

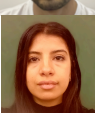
English as a Second Language



Eray Gundogdu

BA, Namık Kemal University, Turkey

English as a Second Language



Asma Hamidi

MA, Lille University

English as a Second Language



Oxana Koroleva  
[oxana@sai.nyc](mailto:oxana@sai.nyc)

MA, Russian State Social University  
Moscow, Russian Federation

English as a Second Language



Ana Kozlova

MA, Linguistics: English, French and Russian as a Second  
Languages, Kaluga State Pedagogical University, Russian  
Federation

English as a Second Language



Diana Kyrychuk

BA in English & Literature  
Kyiv National Linguistic University, Rivne State  
Humanitarian University, Ukraine

English as a Second Language



Lasha Matitshvili

BA, Pedagogy, MA, Linguistics, Theory & Practice of Teaching a  
Foreign Language, Ilia State University of Georgia

English as a Second Language



Enrique Nibeyro  
[enrique@sai2000.org](mailto:enrique@sai2000.org)

MS, Information Systems: Network Administration &  
Security, Touro College, NYC  
BS, MS, Argentine Catholic Pontifical University

Computer Applications



Ender Orhun

BS, Civil Engineer, Yildiz Technical University, Istanbul  
BS, Agricultural Technologies, Anadolu University, Eskisehir,  
BS, Yasar University, Business Administration, Izmir

English as a Second Language



Ivelisse Rymer  
[ivelisse@sai.nyc](mailto:ivelisse@sai.nyc)

MS, Accounting, Touro College, NYC  
BS, Univ. Autonoma Santo Domingo

English for Accounting



Metin Onur Sahud

English as a Second Language



Silcia Soares Farias

MA, Ed D, Universidade Federal do Rio Grande do Norte  
(UFRN), Natal/RN, Brazil

English as a Second Language



Alena  
Stsepanishchava

MA, English & German Languages, Literature &  
Education, Gomel State University

English as a Second Language



Mahsuk Toprak

BS, Beykent University, Turkey

English as a Second Language



Nurselin Tozan

BA, Gazi University, Turkey

English as a Second Language

### ***Advisory Board***

Advisory Board members represent education, community, and business. They advise the Institute on community needs and business trends considered in the design and implementation of our programs. This input keeps the Institute "in touch" with new developments. The Advisory Board is part of our continuing effort to improve and maintain the quality of the training for its students. Advisory Boards members for 2016-2017 are:

Steven Corwin, Corwin Accounting Services

Dr. Barbara Ferraro, Superintendent, Rye Neck Schools (retired 2021)

Rob Goldie, President, Starr Printing

Kenneth Zimmerman, Chateaux Software Development Corp.

### ***Catalog Disclaimer***

The student should be aware that some information in the catalog may change. It is recommended that students considering enrollment check with the school director to determine if there is any change from the information provided in the catalog. In addition, a catalog will contain information on the school's teaching personnel and courses/curricula offered. Please be advised that it is possible that courses/curricula listed in the school's catalog may have changed. It is again recommended that the student check with the school director to determine if there are any changes in the courses/curricula offered or the teaching personnel listed in the catalog.

### ***College Credit – Disclaimer Statement***

The Institute offers curricula measured in clock hours, not credit hours. Certificates of completion are issued to students who meet clock hour requirements. Institutions of higher education do not offer transfer credits for courses taken at the Institute.

### ***Statement of Policy on Discrimination***

The Spanish-American Institute does not discriminate on the basis of age, color, religion, creed, disability, marital status, veteran status, national origin, race, gender, or sexual orientation in its employment practices or in the educational programs and activities it operates. Inquiries concerning this policy of equal opportunity and affirmative action should be referred to the Institute's Affirmative Action Officer, Dante V. Ferraro, 240 West 35 Street, Manhattan, NY 10001, 212-840-7111 (ext. 2800), fax: 646.766.0302, e-mail: [dvf@sai.nyc](mailto:dvf@sai.nyc), [www.sai.nyc](http://www.sai.nyc).

### ***Recordkeeping Policy***

#### ***Student Records***

Student records, including grades, attendance and status are confidential. In order for a third-party to gain access to a student's record,

a FERPA release must be signed by the student. Paper files are kept for 20 years while electronic files are backed up, and stored indefinitely.

#### ***Faculty And Staff Personnel Files***

Faculty and staff personnel files are confidential and are maintained throughout the course of employment.

## II. STUDENT SERVICES



### ***Guidance***

The Institute maintains an "open door" policy regarding the personal and academic guidance of its students. Students seeking advice on personal or academic matters have access to both administration and faculty. The Administration will formally meet with students when deemed necessary to discuss academic, attendance, or school rules and policies issues.

### ***Substance Abuse***

Institute policies prohibit substance abuse among all members of the school community. Faculty and administration encourage students to recognize the dangers of substance abuse and to stay free of abuse. Professional information and counseling sources are available in the Institute's office and resource centers.

### ***Transfer Counseling***

The Institute supports the principle of transfer and the award of credit for previous academic work. School personnel are ready to assist graduates seeking admission to other institutions in requesting credit for courses or programs completed at the Institute.

Students seeking transfer credit to other institutions and programs should keep in mind that each institution is responsible for determining its own policies and practices with regard to transfer and award of credit. There are at least three considerations that may affect transfer:

- *Educational quality of the institution from which the student transfers*
- *Comparability of the nature, content, and level of previous academic work to that offered by the receiving institution.*
- *Appropriateness and applicability of previous academic work to the programs offered by the receiving institution in light of the student's educational goals.*

### ***Library/Learning Resources***

Students and faculty have access to academic resource materials in several ways:

- The Spanish-American Institute Library houses over 450 print volumes, including reference materials.
- The Bookstore provides faculty with audio-visual equipment and language laboratory recordings for classroom use.
- The Student Lounge contains magazines and periodicals.
- Computer workstations provide Internet access.

### ***Student Lounge***

The Student Lounge is available during school hours to students and faculty who wish to study or "snack" before or after class. Students are not permitted in the Student Lounge during those hours when they are scheduled for classes. The Lounge contains current issues of newspapers and magazines, discount ticket vouchers to current Broadway shows and amusement parks. The Student Club "Book Swap" promotes the exchange of used books among students, faculty and friends of the Institute. The Student Club "Book Exchange" provides a place for student to list old textbooks "Wanted to Buy" or "Wanted to Sell".

### ***Student ID Card***

Each student is issued a Student ID Card the first day of class. Students should carry this card with them at all times. Persons unable to identify themselves as students of the Institute may be asked to leave the school. Many social and cultural institutions that offer special student discounts accept the Institute's student ID card.

### ***Bookstore Commissary***

The Institute's Bookstore maintains a supply of textbooks, workbooks, materials and supplies required for course assignments. Students may also purchase light snacks in the Bookstore. The Bookstore is maintained for the

convenience of the student body. While students are required to have the necessary texts, materials, etc., before starting classes, they may obtain them from outside sources, if they so desire.

### ***Housekeeping***

Students and Instructors are responsible for cooperating in:

- maintaining a professional and orderly atmosphere in the classroom,
- insuring that the necessary supplies and equipment are available by requesting them of the administration and staff, and
- following Institute procedures for reporting equipment in need of repair and for ordering teaching supplies through a Dean or the President..

### ***Complaint Procedures***

Students and all employees (including administrative staff) who have concerns, dissatisfactions, or complaints are encouraged to bring them to the Institute's attention as promptly as possible. Problems involving classroom matters should first be discussed directly with the faculty member involved. Questions about administrative policies or non-academic matters should be discussed with a Faculty Student-Services Associate.

Concerns unresolved with a Faculty Student-Services Associate may be discussed with the Dean of Students.

Dissatisfactions unresolved with the Dean of Students should be presented to the President.

Remaining issues may be submitted in writing to the Board of Directors. The submission should describe the problem in detail, include any available documentation, and be signed by the student or employee. The Board will make appropriate inquiries and recommend a resolution within thirty (30) days of receiving the written concern and will notify the student or employee of those findings.

At no time shall a final determination be made by a person or persons directly involved in the complaint itself.

Students and employees are assured that no adverse action will be taken against anyone expressing a concern through this mechanism.

### ***Online Complaint Resolution Form***

Students, faculty and staff may utilize the online Complaint Resolution Form located at:

<http://sai.nyc/Forms/ComplaintResolutionLogForm.html>

### ***Internet Access***

Classroom and office facilities are wired for FIOS Internet access. The entire school facility provides wireless access to the Internet.

### ***Smoking Policy***

In accordance with New York City Law, smoking is not permitted in the Institute or in any indoor public building areas.

### ***Food Consumption Policy***

Food and beverage consumption is discouraged in classrooms. The Student Lounge/Special Events Center are available for those who wish to bring lunch or to snack between classes.

### ***Student Code of Conduct***

Students are expected to conduct themselves properly in classes and about the school area. Movement between classes should be orderly. Students must report promptly to classes when the bell rings. There should be mutual respect among students and teachers at all times.

### ***Suspension/Termination For School-Rule Violations***

A student's failure to behave properly may result in expulsion after a hearing before appropriate administrative personnel. Students dismissed due to improper conduct, poor attendance, failing progress, or tuition arrears are not relieved of financial obligations as specified in the Enrollment Agreement. Such dismissal does not affect the computation of the applicable refund calculation.

## ***Student/Faculty Campus Security Report***

**Campus Security Policies.** All areas of the school are under the constant supervision of the school President and Deans, administrative personnel, and faculty members. Each is familiar with the procedures to follow in responding to emergencies and crime situations. Every effort is made to minimize the risk of crime.

**Procedure for Reporting Emergencies and Crimes.** In the event of an emergency or crime, students should contact the nearest faculty member or administrative support person and/or the Institute President's office.

**Procedure for Responding to Reports of Emergencies & Crimes.** All faculty and staff members will notify the office immediately when appraised of such situations. The President or his designee will notify the police, medical personnel, or other appropriate agencies. In the event of an emergency or crime requires immediate action, all faculty and administrative personnel will respond by calling one or more of the following numbers:

Police, Fire, and Medical Emergencies	911
Mount Sinai West	212.523.4000
1000 Tenth Avenue @ West 57 Street	212.857.9990
New York, NY 10019	

In the event of fire, follow the exit procedures listed for fires on posted signs. Fire extinguishers are located throughout the school. All school personnel are familiar with fire and exit procedures.

**Policy Regarding Alcohol and Drug-Related Violations.** In accordance with Federal regulations stipulated by the Drug Free Act of 1988, the drug and alcohol policy of the Spanish-American Institute is as follows:

- The unlawful manufacture, distribution, dispensation, possession, or use of alcohol, narcotics, or illicit drugs, or the consumption of alcohol by persons under the State legal age is prohibited on Institute premises.
- Any student or employee discovered to be violating these rules is subject to suspension and/or dismissal. Such action will be taken independently of any criminal action that may arise from a violation of civil law governing these areas.
- Reinstatement of suspended students or employees will not occur until the Institute can ascertain by professional documentation that the student or employee has undergone counseling and treatment and is free from any drug or alcohol addiction.

### **Information Programs Available.**

If you or someone you know needs help with drug and/or alcohol or if you would like information, please contact the school office or one of the following agencies:

- Narcotics Anonymous Regional Helpline ~ 212-929-6262
- Alcoholics Anonymous Intergroup Hotline ~ 212-647-1680

## ***Student Housing***

Housing is an intensely personal decision. Make your selection with care. Use good common sense and sound consumer practices when making your housing choices:

- verify all information before you make reservations;
- try to obtain references through friends and family;
- never pay in cash - - - use a credit card or check.
- be sure to get a receipt
- reserve for a short, trial period before committing for a long-term housing arrangement directly

The Institute does not conduct "home stay" operations. It does not provide, recommend or contract with others for student housing services. It does not collect fees for housing services.

## ***Medical Insurance***

While the Institute does not require students to obtain medical care insurance or recommend a specific plan, it is important for students to realize that medical care expenses can jeopardize a student's financial status and ability to maintain full-time student status in good standing.

### ***Importance of Health Insurance***

Having health insurance is also important because coverage helps people get timely medical care and improves their lives and health. Without health insurance people:

- receive less medical care and less timely care. (Overall, uninsured people get about half as much care as the privately insured—even taking into account free care received from providers).
  - have worse health outcomes. (Uninsured people are sicker and more apt to die prematurely than their insured counterparts. Conversely, having health coverage is associated with better health-related outcomes).
- The following article provides more detailed information on why it is important to consider getting a health insurance.

**“Why Health Insurance Is Important”**

**New York State Health Plans:**

<https://www.nystatehealthplans.com/>

**Where Do You Get Health Insurance?**

There are many insurance companies that offer health insurance for international students studying in the United States. Be careful when selecting an insurer. The following organization indicates on its website that it is recognized by the American Association of Intensive English Programs (AAIEP) and NAFSA: Association of International Educators. International Student Insurance

<http://www.internationalstudentinsurance.com/student-health-insurance/>

**Glossary of Health Insurance**

It is important to understand the terminology used when discussing health insurance. The following link provides a glossary of health insurance terminology:

[http://www.naic.org/documents/index\\_health\\_reform\\_glossary.pdf](http://www.naic.org/documents/index_health_reform_glossary.pdf)

***Policy on Dissemination of Information***

The Institute will use, as appropriate, all reasonable means to communicate policies, procedures, academic status, and updates to the public, students, staff and administration. This includes email, SMS text messaging, regular post office mail, memos, meetings, school website, social media, bulletin boards and shared network drives.

Students, faculty, staff and administrators for their part will assist in this effort by making every reasonable effort to keep the Institute updated on changes to their e-mail addresses, home addresses, and cell phone and land-line phone numbers.

***Student Adjustment To Culture And Community***

- Information may be found on the Institute’s website at the following locations:
- <http://www.sai.nyc/Handbooks/StudentAdjustmentToCultureAndCommunity2018.html>
- <http://www.sai.nyc/Handbooks/OrientationTOC.html>
- <https://nycwell.cityofnewyork.us/en/>

**III. *ESL-Plus Requirements for F-1 Student Visa Applicants***



***ESL-Plus Requirements for F-1 Student Visa Applicants (1920 hours)***

In order to pursue a full-time ESL-Plus course of study eligible for F-1 student visa application, students must:

- attend twenty class-hours per week
- maintain satisfactory academic progress
- have English language skills acquisition as their primary educational objective
- consult with a Faculty Student-Services Associate to select an appropriate sequence of courses from among those ESL-only and ESL-plus courses listed in the following “Course Description” section.

***F-1 Student Visa SEVIS Record***

The Institute's designated school official terminate the SEVIS (Student and Exchange Visitor Information System) record of any F-1 student visa student who does not comply with the SEVP (Student and Exchange Visitor Program) full course of study requirement or where a pattern of non-attendance is evident.

Students may complete less than (or more than) course hours of work in listed individual course hours if teachers recommend advancement upon completion of terminal objectives prior to (or after) completion of the individual course hours. Slower students must complete 65% of the course hour terminal objectives to maintain satisfactory academic progress. Therefore, the number of hours spent in each course will vary according to course placement at registration and individual achievement of terminal course objectives.

- \*Students begin studies at the level corresponding to their current language abilities as determined by a placement test and remain in the assigned level for the number of hours indicated unless the instructor recommends a higher level sooner or later. Teacher recommendations are based on student attainment of the course terminal objectives in less than (or more than) the normal number of hours.

### ***Information Regarding The Maximum Times A Class Can Be Repeated***

Students who enroll in the ESL-Plus Course of Study move their individual levels or courses at their own rate. As long as a student is in good academic standing (as defined in our student policies), a student may be in a given level for an variable amount of time.

### ***Impact of Repeating Classes on Immigration Status***

If a student is not in good academic standing, and making satisfactory academic progress in their language courses for two, consecutive bi-monthly exam periods, that student will be placed on probation for the next two bi-monthly exam periods. A student who has not achieved Good Academic Standing at the end of this probationary period is not eligible to continue at the Institute.

The SEVIS record of a student who thus fails to maintain good academic standing would be terminated for “Otherwise Failing To Maintain Status”. The “Remarks” section would specify “Failure to Maintain Good Academic Standing”.

TUITION: See List of Courses on page 54. Certificate: See List of Courses on page 54.

## **IV. COURSE DESCRIPTIONS**



### ***200 English Keyboarding For Information Processing (48 hour cycles\*)***

**PREREQUISITE:** English Level V or by individual placement through advisement

**DESCRIPTION:** In this “English Through Keyboarding” course students develop English language skills related to keyboarding and information processing. Students acquire language related to keyboarding while exploring basic keyboarding and information processing. Students also utilize language skills to complete basic computer application tasks. (This course is not intended to provide instruction which will result in the student's acquisition of occupational skills. Placement assistance by the school is not available for this course.)

**GOALS:** This course will develop student’s :

- keyboarding vocabulary and
- identification of keyboarding spelling and punctuation errors

**OBJECTIVES:** Students will be able to:

- demonstrate understanding of English keyboarding terms;
- identify and modify English spelling, punctuation, and other language errors in a document
- type a short timed document using grammatically correct English.

**STUDENT LEARNING OUTCOMES:**

- identify and utilize keyboarding terms with 80% accuracy.
- read and understand English letter combinations and words, word combinations, sentences, and passages;
- recognize and correct spelling, punctuation, and other English language errors; and
- compose short timed-writings with 80% accuracy



### \* **Instructional Methods.**

- This course is designed to be repeated in multiple, continuous, simultaneous 48 course-hour cycles toward proficiency progression of course stated outcomes & student personal proficiency goals as determined in consultation with Student Services Associates.

**TUITION:** \$192      **Certificate:** Keyboarding for Information Processing

### ***201 English for Keyboarding (Basic Course) (120 hour cycles\*)***

**PREREQUISITE:** English Level V or by individual placement through advisement

**DESCRIPTION:** In this “English Through Keyboarding” course students develop English language skills related to keyboarding and information processing. Students acquire language related to keyboarding while exploring keyboarding and information processing. (This course is not intended to provide instruction which will result in the student's acquisition of occupational skills. Placement assistance by the school is not available for this course.)

**GOALS:** This course will reinforce students’:

- ability to comprehend and use English vocabulary related to keyboarding and
- keyboarding techniques.

**OBJECTIVES:** Students will be able to:

- read, comprehend, and edit English language errors in letters and documents
- transfer and type letters, reports, tables, memos and business documents from handwritten text
- type 25 WPM with less than 5 errors in 5 minutes.

**STUDENT LEARNING OUTCOMES:**

- to read and understand English letter combinations and words, word combinations, sentences, and passages;
- to recognize and correct spelling, punctuation, and other English language errors;
- to recognize directions in English when practicing keyboarding exercises;
- to distinguish concepts and implementation;
- to identify and correct English language errors in producing documents;
- to produce letters, reports, memos, tables, and other personal-business and business documents from hand-written and from printed text in English with 80% accuracy;
- to develop touch control of the keyboard and proper keyboarding techniques; and
- to build basic speed and accuracy skills (to 25 wpm keyboarding English text with no more than five errors in five minutes).

### \* **Instructional Methods:**

- This course is designed to be repeated in multiple, continuous, simultaneous 120 course-hour cycles toward proficiency progression of course stated outcomes & student personal proficiency goals as determined in consultation with Student Services Associates.
- An integrated cumulative skills development methodology increases language retention and fluency by stimulating students to make meaning from a new language through active learning activities. Recorded listening passages build on vocabulary and ideas from background material and exercises. Students work individually, in pairs, and in small groups on guided, linked activities built around each unit's theme. Instruction will be supplemented with ESL audio and video material keyed to textbook units.

### **\*Information Regarding The Maximum Number Of Times A Class Can Be Repeated**

Students who enroll in the ESL-Plus Course of Study move their individual levels or courses at their own rate. As long as a student is in good academic standing (as defined in our student policies), a student may be in a given level for an variable amount of time.

**TUITION:** \$480      **Certificate:** Keyboarding (Basic Course)

### ***202 English For Keyboarding (Advanced Course) (120 hour cycles\*)***

**PREREQUISITE:** Keyboarding 201 or equivalent.

**COURSE DESCRIPTION:** In this “English Through Keyboarding” course students further develop English language skills related to keyboarding and information processing. Students acquire structural and functional language related to keyboarding while business correspondence, reports, tabulations, forms from unarranged and rough-draft hand-written and print copy sources in English. (This course is not intended to provide

instruction which will result in the student's acquisition of occupational skills. Placement assistance by the school is not available for this course.)

**GOALS:** This course will:

- reinforce students' receptive ability to interpret advanced keyboarding exercises
- develop students' interpretation and application of business language and situations

**OBJECTIVES:** Students will be able to:

- demonstrate correct vocabulary and grammar usage when producing a document with 80% accuracy
- recognize keyboarding instructions
- examine information from multiple sources to determine proper document format.
- interpret and type documents from printed English.
- type 25 wpm with no more than 5 errors in 5 minutes

**STUDENT LEARNING OUTCOMES:**

- comprehend and utilize English word division and composite words;
- interpret directions in English when practicing advanced keyboarding exercises;
- interpret and apply English language descriptions of business situations in the production of documents;
- synthesize information from various English language sources that will determine the format of document production;
- produce letters, reports, memos, tables, and other personal-business and business documents from hand-written and from printed text in English, identifying and correcting language errors;
- develop touch control of the keyboard and proper keyboarding techniques; and
- build basic speed and accuracy skills to 25 wpm while keyboarding English text with no more than five errors in five minutes.

#### \*Instructional Methods.

- All courses are designed to be repeated in multiple, continuous, simultaneous course-hour cycles toward proficiency progression of course stated outcomes & student personal proficiency goals as determined in consultation with Student Services Associates.

#### \*Information Regarding The Maximum Number Of Times A Class Can Be Repeated

Students who enroll in the ESL-Plus Course of Study move their individual levels or courses at their own rate. As long as a student is in good academic standing (as defined in our student policies), a student may be in a given level for an variable amount of time.

**TUITION:** \$480    Certificate: Keyboarding (Advanced Course)

### ***203 English For Keyboarding (Expert Course) (80 hour cycles\*)***

**PREREQUISITE:** Keyboarding 202 or equivalent.

**COURSE DESCRIPTION:** : In this “English Through Keyboarding” course students further develop English language skills related to keyboarding; focusing on speed and accuracy skills through production of various kinds of business correspondence, of reports, of tabulations, and of forms from unarranged and rough-draft hand-written and print copy sources in English. (This course is not intended to provide instruction which will result in the student's acquisition of occupational skills. Placement assistance by the school is not available for this course.)

**GOALS:** This course will reinforce students':

- ability to apply English reading, speaking and writing skills to determine format and produce business documents
- keyboarding skills, including touch control, techniques, and speed

**OBJECTIVES:** Students will be able to:

- demonstrate comprehension of keyboarding directions and apply to various business situations
- differentiate between various business situations and modify document formats, including letters, reports, memos and tables.
- locate English grammatical, spelling and composition errors
- type 45 wpm with less than 5 errors in 5 minutes

**STUDENT LEARNING OUTCOMES:**

- comprehend and apply directions in English when practicing advanced keyboarding exercises within integrated business situations experiences requiring English language reading, discussion, and writing skills;
- distinguish English language descriptions of complex business situations that will determine the production of

- documents;
- synthesize information from various English language sources that will determine the format of document production;
- produce within situated experiences various kinds of letters, reports, memos, tables, and other personal-business and business documents from English language text, identifying and correcting language errors;
- develop advanced touch control of the keyboard and proper keyboarding techniques; and
- build basic speed and accuracy skills (to 45 wpm, keyboarding English text with no more than five errors in five minutes).

**\*Instructional Methods.**

- All courses are designed to be repeated in multiple, continuous, simultaneous course-hour cycles toward proficiency progression of course stated outcomes & student personal proficiency goals as determined in consultation with Student Services Associates.

**\*Information Regarding The Maximum Number Of Times A Class Can Be Repeated**

Students who enroll in the ESL-Plus Course of Study move their individual levels or courses at their own rate. As long as a student is in good academic standing (as defined in our student policies), a student may be in a given level for an variable amount of time.

**TUITION:** \$320    Certificate: Keyboarding (Expert Course)

***235 English For Introduction to Word for MAC (80 hour cycles\*)***

**PREREQUISITE:** None

**Textbook:** : *Microsoft Office 2008 for the Macintosh: Visual QuickStart Guide* by Steve Schwartz. Peachpit Press, 2008. ISBN 0-321-53400-X.

**COURSE DESCRIPTION:** this course builds word processing speed and accuracy through practice in the production of various kinds of business correspondence, of reports, of tabulations, and of forms from unarranged and rough-draft copy sources.

**OBJECTIVES:** By the end of the course, students will be able to:

- understand, discuss and describe word processing situations;
- discuss text describing business situations requiring word processing solutions;
- follow directions when practicing word processing exercises;
- ask questions concerning concepts and implementation;
- proofread documents and make necessary corrections;
- produce letters, reports, memos, tables, and other personal-business and business documents from copy, identifying and correcting errors;
- apply basic word processing using Word, including entering, formatting, creating tables, using styles and templates, mail merging, and using graphics

**\*Instructional Methods.**

- All courses are designed to be repeated in multiple, continuous, simultaneous course-hour cycles toward proficiency progression of course stated outcomes & student personal proficiency goals as determined in consultation with Student Services Associates.

**Information Regarding The Maximum Number Of Times A Class Can Be Repeated**

Students who enroll in the ESL-Plus Course of Study move their individual levels or courses at their own rate. As long as a student is in good academic standing (as defined in our student policies), a student may be in a given level for an variable amount of time.

**TUITION:** \$320    Certificate: Introduction to Microsoft Word for Windows

***300 English For Business Management (120 hour cycles\*)***

**PREREQUISITE:** English Level V or by individual placement through advisement

**COURSE DESCRIPTION:** In this “English Through Business Management” course students develop English language skills and acquire business terminology and common structures used in business settings. Through reading, discussion, and case study analysis, students develop an understanding of English language usage:

- in small business planning,
- marketing and operational strategy development,

- legal and financial issues, and
- day-to-day supervision and control procedures.

(This course is not intended to provide instruction which will result in the student's acquisition of occupational skills. Placement assistance by the school is not available for this course.)

**GOALS:** This English For Specific Purposes course will develop the student's:

- knowledge of English business management key terms
- ability to assess visual material and
- ability to analyse, discuss and write a small business plan in English

**OBJECTIVES:** Students will be able to:

- describe key small English business management terms
- use English to examine and interpret various visual materials including, graphs and charts
- analyze, discuss and write about small business problems in English and
- create a small business plan in English

**STUDENT LEARNING OURCOMES:** By the end of the course, students will be able to:

- identify key English terms related to small business management;
- analyze and interpret, in English, graphs, charts, and other visual material;
- to read, discuss, and write in English about cases illustrating typical small business situations or problems; and
- to develop an individual small business plan in English.

**\*Instructional Methods.**

- All courses are designed to be repeated in multiple, continuous, simultaneous course-hour cycles toward proficiency progression of course stated outcomes & student personal proficiency goals as determined in consultation with Student Services Associates.

**Information Regarding The Maximum Number Of Times A Class Can Be Repeated**

Students who enroll in the ESL-Plus Course of Study move their individual levels or courses at their own rate. As long as a student is in good academic standing (as defined in our student policies), a student may be in a given level for an variable amount of time.

**TUITION:** \$480 Certificate: Business Management

***302 English For Accounting (First Course) (120 hour cycles\*)***

**PREREQUISITE:** English Level V or by individual placement through advisement

**COURSE DESCRIPTION:** In this “English Through Accounting” course students develop English language skills to be successful with basic accounting functions. This course sequence introduces students to the purposes and principles of accounting and the practice of fundamental accounting procedures. Students analyze and apply accounting concepts and procedures to real-life situations drawn from various types of businesses. (This course is not intended to provide instruction which will result in the student's acquisition of occupational skills. Placement assistance by the school is not available for this course.)

**GOALS:** This course will introduce students to:

- the purposes and principles of accounting
- fundamental accounting procedures
- accounting principles viewed from different business types

**OBJECTIVES:** Students will be able to:

- read and explain accounting descriptions and business language.
- clearly pronounce numbers and numerical functions
- interpret and use visual materials including charts and graphs
- speak, read, and write about various accounting situations
- breakdown financial statements and analyze transactions
- apply accounting principles to merchandising inventories and sales costs

**STUDENT LEARNING OUTCOMES:**

- read and better understand written English language descriptions of accounting, the language of business;
- develop oral fluency with numbers and numerical functions;

- interpret charts, graphs, and other visual materials;
- speak and to write in English about situations and problems requiring accounting activities or solutions;
- read for detail in the context of accounting problems and directions;
- interpret orally and in writing how businesses communicate with financial statements; and
- apply accounting principles and procedures to analyzing and recording transactions, to accrual accounting and financial statement, to completing the accounting cycle, to accounting for merchandising activities and to merchandise inventories and sales costs.

**Instructional Methods.**

- All courses are designed to be repeated in multiple, continuous, simultaneous course-hour cycles toward proficiency progression of course stated outcomes & student personal proficiency goals as determined in consultation with Student Services Associates.

**\*Information Regarding The Maximum Number Of Times A Class Can Be Repeated**

Students who enroll in the ESL-Plus Course of Study move their individual levels or courses at their own rate. As long as a student is in good academic standing (as defined in our student policies), a student may be in a given level for an variable amount of time.

**TUITION:** \$480    **Certificate:** Accounting (First Course)

***303 English For Accounting (Intermediate Course) (120 hour cycles\*)***

**PREREQUISITE:** Accounting 302 or equivalent

**COURSE DESCRIPTION:** In this “English Through Accounting” course students develop English language skills to be successful with intermediate accounting functions. This second course in an accounting sequence expands students' knowledge about the purposes and principles of accounting and the practice of fundamental accounting procedures. Students analyze and apply accounting concepts and procedures to real-life situations drawn from various types of businesses. *(This course is not intended to provide instruction which will result in the student's acquisition of occupational skills. Placement assistance by the school is not available for this course.)*

**GOALS:** This course will reinforce students’ knowledge of

- the purposes and principles of accounting
- fundamental accounting procedures
- accounting principles viewed from different business types

**OBJECTIVES:** Students will be able to:

- interpret written accounting and general business language
- interpret and use visual materials including charts and graphs
- speak, read, and write about various accounting situations
- breakdown financial statements and analyze transactions
- explain the concept and form of accounting information systems
- apply accounting principles to cash and internal control; to receivables and short-term investments; to plant assets, natural resources, and intangibles; to current liabilities; and to partnerships.

**STUDENT LEARNING OUTCOMES:** By the end of the course, students will be able to:

- to read and better understand written English language descriptions of accounting, the language of business;
- to interpret charts, graphs, and other visual materials;
- to talk and to write in English about situations and problems requiring accounting activities or solutions;
- to read for detail in the context of accounting problems and directions;
- to interpret how businesses communicate with financial statements
- to understand the concept and forms of accounting information systems; and
- to apply accounting principles and procedures to cash and internal control; to receivables and short-term investments; to plant assets, natural resources, and intangibles; to current liabilities; and to partnerships.

**\*Instructional Methods.**

- All courses are designed to be repeated in multiple, continuous, simultaneous course-hour cycles toward proficiency progression of course stated outcomes & student personal proficiency goals as determined in consultation with Student Services Associates.

### **\*Information Regarding The Maximum Number Of Times A Class Can Be Repeated**

Students who enroll in the ESL-Plus Course of Study move their individual levels or courses at their own rate. As long as a student is in good academic standing (as defined in our student policies), a student may be in a given level for an variable amount of time.

**TUITION:** \$480    Certificate: Accounting (Intermediate Course)

### ***304 English For Accounting (Advanced I) (60 hour cycles\*)***

**PREREQUISITE:** Accounting 303 or equivalent

**COURSE DESCRIPTION:** In this “English Through Accounting” course students develop English language skills to be successful with advanced accounting functions. This third course in an accounting sequence expands students' knowledge about the purposes and principles of accounting and the practice of fundamental accounting procedures. Students analyze and apply accounting concepts and procedures to real-life situations drawn from various types of businesses. *(This course is not intended to provide instruction which will result in the student's acquisition of occupational skills. Placement assistance by the school is not available for this course.)*

**GOALS:** This course will expand students’ knowledge of:

- purposes and principles of accounting
- fundamental accounting procedures
- analysis and application of various accounting concepts and procedures

**OBJECTIVES:** Students will be able to:

- read and explain accounting descriptions and business language.
- clearly pronounce numbers and numerical functions
- interpret and use visual materials including charts and graphs
- speak, read, and write about various accounting situations
- breakdown financial statements and analyze transactions
- apply accounting principles to equity transactions and corporate accounting, term liabilities, long-term investments, reporting and analyzing cash flows, analysis of financial statements, and managerial accounting and job order cost accounting concepts and principles.

**STUDENT LEARNING OUTCOMES:** By the end of this course, students will be able to:

- read and better understand written English language descriptions of accounting, the language of business;
- develop oral fluency with numbers and numerical functions;
- interpret charts, graphs, and other visual materials;
- talk and to write in English about situations and problems requiring accounting activities or solutions;
- read for detail in the context of accounting problems and directions;
- interpret how business communicates with financial statements
- apply accounting principles and procedures to equity transactions and corporate accounting, term liabilities, long-term investments, reporting and analyzing cash flows, analysis of financial statements, and managerial accounting and job order cost accounting concepts and principles.

### **\*Instructional Methods.**

- *All courses are designed to be repeated in multiple, continuous, simultaneous course-hour cycles toward proficiency progression of course stated outcomes & student personal proficiency goals as determined in consultation with Student Services Associates.*

### **Information Regarding The Maximum Number Of Times A Class Can Be Repeated**

Students who enroll in the ESL-Plus Course of Study move their individual levels or courses at their own rate. As long as a student is in good academic standing (as defined in our student policies), a student may be in a given level for an variable amount of time.

**TUITION:** \$240    Certificate: Accounting (Advanced I)

### ***305 English For Accounting (Advanced II) (60 hour cycles\*)***

**PREREQUISITE:** Accounting 304 or equivalent

**COURSE DESCRIPTION:** In this “English Through Accounting” course students develop English language skills to be successful with basic accounting functions. This fourth course in an accounting sequence expands students' knowledge about the purposes and principles of accounting and the practice of fundamental accounting procedures. Students analyze and apply accounting concepts and procedures to real-life situations drawn from various types of businesses. (This course is not intended to provide instruction which will result in the student's acquisition of occupational skills. Placement assistance by the school is not available for this course.)

**GOALS:** This course will reinforce students' knowledge of:

- purposes and principles of accounting
- fundamental accounting procedures
- analysis and application of various accounting concepts and procedures

**OBJECTIVES:** Students will be able to:

- interpret written English accounting and general business language
- interpret and use English visual materials including charts and graphs
- speak, read, and write in English about various accounting situations
- breakdown financial statements and analyze transactions in English
- explain in English the concept and form of accounting information systems
- apply accounting principles and procedures to process cost accounting, cost allocation and performance measurement, cost-volume-profit analysis, master budgets and planning, flexible budgets and standard costs, and capital budgeting.

**STUDENT LEARNING OUTCOMES:**

- to read and better understand written English language descriptions of accounting, the language of business;
- to develop oral fluency with numbers and numerical functions;
- to interpret charts, graphs, and other visual materials;
- to talk and to write in English about situations and problems requiring accounting activities or solutions;
- to read for detail in the context of accounting problems and directions;
- to explain orally and in writing how businesses communicate with financial statements
- to apply accounting principles and procedures to process cost accounting, cost allocation and performance measurement, cost-volume-profit analysis, master budgets and planning, flexible budgets and standard costs, and capital budgeting.

**\*Instructional Methods.**

- All courses are designed to be repeated in multiple, continuous, simultaneous course-hour cycles toward proficiency progression of course stated outcomes & student personal proficiency goals as determined in consultation with Student Services Associates.

**\*Information Regarding The Maximum Number Of Times A Class Can Be Repeated**

Students who enroll in the ESL-Plus Course of Study move their individual levels or courses at their own rate. As long as a student is in good academic standing (as defined in our student policies), a student may be in a given level for an variable amount of time.

**TUITION:** \$240 Certificate: Accounting (Advanced II)

### ***404 Business Communications (72 hour cycles\*)***

**PREREQUISITE:** None

**COURSE DESCRIPTION:** this course emphasizes the application of correct grammar and punctuation to letters, memos, reports, and other forms of personal and business communication.

**OBJECTIVES:** By the end of the course, students will be able to:

- recognize and solve common sentence problems;
- understand how context affects meaning and to correct grammar and other writing choices;
- recognize and use correct grammar in context with an emphasis upon grammar and usage issues for ESL writers;
- understand and use correct punctuation, mechanics, and spelling in business writing; and
- use language skills to develop letters, memos, and other common forms of personal-business and business communication.

### **\*Instructional Methods.**

- All courses are designed to be repeated in multiple, continuous, simultaneous course-hour cycles toward proficiency progression of course stated outcomes & student personal proficiency goals as determined in consultation with Student Services Associates.

### **\*Information Regarding The Maximum Number Of Times A Class Can Be Repeated**

Students who enroll in the ESL-Plus Course of Study move their individual levels or courses at their own rate. As long as a student is in good academic standing (as defined in our student policies), a student may be in a given level for an variable amount of time.

**TUITION:** \$288    **Certificate:** Business Communications

### ***500 English Literacy (120 hour cycles \*)***

**Prerequisite(s):** None.

**Course Description:** A basic introduction to English for students who have had little or no prior school experience in English.

**Course Goals:** To develop students' basic ability to comprehend and respond appropriately to simplified spoken English and to produce basic spoken English in social situations; to develop students' basic ability to comprehend and analyze simplistic texts in English; to develop students' ability to recognize word order and simple sentence structure.

**Course Objectives:** . Students will learn fundamental literacy skills and basic communicative competence in English needed to successfully continue ESL instruction and/or to participate successfully in the workplace and community. By the end of the course, students should have developed basic receptive skills for listening and reading American English.

**Student Learning Outcomes:** . Students will be able to: .

- Recognize frequently used words, phrases and questions in familiar contexts.
- Respond appropriately to simple questions regarding personal information and present activities.
- State personal information; and ask for personal information.
- Use personal information to complete simple forms.
- Write basic personal information.
- Write simple sentences using personal information.
- Recognize personal information in print.

### **\* Instructional Methods.**

- This course is designed to be repeated in multiple, continuous, simultaneous 120 course-hour cycles toward proficiency progression of course stated outcomes & student personal proficiency goals as determined in consultation with Student Services Associates.

### **\*Information Regarding The Maximum Number Of Times A Class Can Be Repeated**

Students who enroll in the ESL-Plus Course of Study move their individual levels or courses at their own rate. As long as a student is in good academic standing (as defined in our student policies), a student may be in a given level for an variable amount of time.

- Daily classes encourage application of newly-learned skills to everyday situations through conversation, reading, and writing. Language elements are introduced, used, and reused in different written, oral, and aural situations within contexts drawn from daily life. Instruction will be supplemented with companion ESL video and music recordings keyed to textbook units.

**Learning Activities:** role-plays, pair work, small group work, practice grammatical structures in context, controlled conversation practice, creative conversation practice, model and repeat, peer review, journals.

**Textbook:** *Longman ESL Literacy*, Yvonne Wong Nishio, Pearson Longman, 2006 or comparable text.

**TUITION:** \$480    **Certificate:** English Literacy



## ***501 English As A Second Language I-VI (120 hour cycles\* [each level])***

### ***501.1 English as a Second Language (Level I)***

**Prerequisite(s):** Placement test or ESL 500.

**Course Description:** Prepares students to understand simple spoken phrases and respond to basic personal information questions.

**Course Goal:** To develop students' ability to comprehend and respond to spoken English on familiar topics, such as self, school, family, work and everyday activities; to develop students' ability to comprehend and appropriately use basic grammatical structures in both written and spoken English; to develop students' ability to identify key ideas in basic texts relating to everyday topics; and to develop students' ability to construct simple and compound sentences on a familiar topic or idea.

**Course Objectives:** Students will listen, speak, read and write English at a beginning level.

**Student Learning Outcomes:** Students will be able to:

- State simple descriptions of people, places, routines, likes and dislikes.
- Respond appropriately to simple questions regarding personal information, present activities, past activities and home, family, work and hobbies.
- Recognize and identify key ideas in a short passage relating to self, home, family, work, and hobbies.
- Write simple sentences and compound sentences relating to self, home, family, work, hobbies and present and past activities.

#### **\*Instructional Methods:**

- This course is designed to be repeated in multiple, continuous, simultaneous 120 course-hour cycles toward proficiency progression of course stated outcomes & student personal proficiency goals as determined in consultation with Student Services Associates.
- Daily classes encourage application of newly-learned skills to everyday situations through conversation, reading, and writing. Language elements are introduced, used, and reused in different written, oral, and aural situations within contexts drawn from daily life. Instruction will be supplemented with companion ESL video and music recordings keyed to textbook units.

#### **\*Information Regarding The Maximum Number Of Times A Class Can Be Repeated**

Students who enroll in the ESL-Plus Course of Study move their individual levels or courses at their own rate. As long as a student is in good academic standing (as defined in our student policies), a student may be in a given level for an variable amount of time.

**Learning Activities:** lecture listening, role-plays, pair work, small group work, practice grammatical structures in context, controlled conversation practice, creative conversation practice, model and repeat, peer review, journals, paragraph modeling.

**Textbook:** *WorldView 1* (or comparable text), Pearson Education, 2002.

### ***501.2 English as a Second Language Level II)***

**Prerequisite(s):** Placement Test or ESL I.

**Course Description:** Prepares students to communicate using routine statements related to personal needs, desires, and feelings in familiar social contexts.

**Course Goals:** To improve students' ability to comprehend and respond appropriately to high-beginning spoken English and to improve students' ability to use spoken English in real world situations; to improve students' ability to use grammatical structures necessary for expressing the present, the future and the past time; to develop students' ability to comprehend and analyze high beginning texts.

**Course Objectives:** Students will understand, speak, read and write at a basic or high beginning level.

**Student Learning Outcomes:** Students will be able to:

- Express simple statements and questions in the present, past and future time frame related to basic needs and common activities, using previously learned phrases.
- Communicate needs and activities using appropriate time frame and vocabulary.

- Employ simple clarification requests to determine meaning of question or statement.
- Recognize words that signal differences between present, past and future.
- Respond appropriately using present, past and future on familiar topics.
- Interpret short paragraphs on familiar topics.
- Identify sequence of events in short readings.
- Examine authentic documents to locate specific information.
- Produce a paragraph on a familiar topic.

**\*Instructional Methods:**

- This course is designed to be repeated in multiple, continuous, simultaneous 120 course-hour cycles toward proficiency progression of course stated outcomes & student personal proficiency goals as determined in consultation with Student Services Associates.
- An integrated cumulative skills development methodology increases language retention and fluency by stimulating students to make meaning from a new language through active learning activities. Recorded listening passages build on vocabulary and ideas from background material and exercises. Students work individually, in pairs, and in small groups on guided, linked activities built around each unit's theme.

**\*Information Regarding The Maximum Number Of Times A Class Can Be Repeated**

Students who enroll in the ESL-Plus Course of Study move their individual levels or courses at their own rate. As long as a student is in good academic standing (as defined in our student policies), a student may be in a given level for an variable amount of time.

**Learning Activities:** lecture listening, role-plays, pair work, small group work, practice grammatical structures in context, controlled conversation practice, creative conversation practice, model and repeat, peer review, journals, paragraph modeling, peer review.

**Textbooks:** P. Merdinger and L. Barton, *NorthStar: Listening & Speaking Level I and Reading & Writing Level I* (3rd Edition), Longman, 2009 (or comparable).

**501.3 English as a Second Language Level III**

**Prerequisite(s):** Placement Test or ESL II.

**Course Description:** Prepares students to communicate in familiar job, social or everyday situations in standard American English. Prerequisite(s): Placement Test or ESL II.

**Course Goals:** To broaden students' ability to comprehend and respond appropriately to spoken English and to use spoken English in a variety of work and social situations; to broaden students' ability to comprehend and use grammatical structures in written and spoken English in non-academic setting; to broaden students' ability to comprehend texts in English; to increase students' fluency in producing written language.

**Course Objectives:** Students will read and listen to a variety of sources with general understanding; express ideas orally and in written form with fluency.

**Student Learning Outcomes:** Students will be able to:

- Recognize main ideas and details in conversations and short lectures.
- Communicate needs, activities and events using appropriate time frame and vocabulary.
- Employ clarification strategies.
- Apply linguistic, socio-cultural and other background knowledge and strategies to understand the intent of a speaker and to respond appropriately.
- Speak so others can understand by recalling and using limited vocabulary including words related to common, everyday topics, personal experience, know and use basic grammar and sentence structure and appropriate level of formality.
- Interpret short paragraphs on familiar topics.
- Predict meanings of unfamiliar vocabulary with contextual clues.
- Identify sequence of events in short readings.
- Examine authentic documents to locate specific information.
- Convey ideas in a paragraph with detailed information.

**\*Instructional Methods:**

- This course is designed to be repeated in multiple, continuous, simultaneous 120 course-hour cycles toward proficiency progression of course stated outcomes & student personal proficiency goals as determined in consultation with Student Services Associates.
- An integrated cumulative skills development methodology increases language retention and fluency by stimulating students to make meaning in a new language through active learning activities. Recorded listening passages build on vocabulary and ideas from background material and exercises. Students work individually, in pairs, and in small groups on guided, linked activities built around each unit's theme. Instruction is supplemented with ESL audio and video material keyed to textbook units.

**\*Information Regarding The Maximum Number Of Times A Class Can Be Repeated**

Students who enroll in the ESL-Plus Course of Study move their individual levels or courses at their own rate. As long as a student is in good academic standing (as defined in our student policies), a student may be in a given level for an variable amount of time.

**Learning Activities:** lecture listening, role-plays, pair work, small group work, practice grammatical structures in context, controlled conversation practice, creative conversation practice, model and repeat. journals, process writing, peer review.

**Textbook:** *NorthStar Listening & Speaking Level II and Reading & Writing Level II (3rd Edition.*, Pearson Education, (or comparable text). (formerly 2nd Edition, NorthStar: Basic/Low Intermediate)

*501.4 English as a Second Language Level IV)*

**Prerequisite(s):** Placement Test or ESL III.

**Course Description:** Prepares students to respond to multi-step directions and communicate using formal and informal language in a variety of situations. Students follow written instructions, read narratives and interpret material.

**Course Goals:** To deepen students' ability to comprehend and respond appropriately to natural, authentic spoken English; to use spoken English in a variety of social, non-academic and professional settings; to deepen students' ability to comprehend and use grammatical structures in both written and spoken English in various contexts; to deepen students' ability to comprehend and analyze authentic texts; to deepen students' ability to organize information and produce summaries.

**Course Objectives:** Students will read and listen to a variety of sources; express his/her ideas orally and in written form with fluency and clarity.

**Student Learning Outcomes:** Students will be able to:

- State detailed descriptions of events, activities and personal experiences.
- Identify main ideas and some details of extended conversations and broadcasts.
- Employ clarification strategies.
- Speak so others can understand to recall and use high-frequency vocabulary, display control of basic grammar and a variety of sentence types.
- Read with understanding to decode and recognize most everyday and some unfamiliar words.
- Identify sequence of events in extensive readings.
- Examine and analyze authentic documents to locate specific information.
- Determine the purpose and audience for communicating in writing.
- Convey ideas in a short essay with detailed information.
- Identify and modify sentences for time frame errors and mechanics, such as spelling, punctuation and capitalization.

**\*Instructional Methods:**

- This course is designed to be repeated in multiple, continuous, simultaneous 120 course-hour cycles toward proficiency progression of course stated outcomes & student personal proficiency goals as determined in consultation with Student Services Associates.
- An integrated cumulative skills development methodology increases language retention and fluency by stimulating students to make meaning from a new language through active learning activities. Recorded

listening passages build on vocabulary and ideas from background material and exercises. Students work individually, in pairs, and in small groups on guided, linked activities built around each unit's theme. Instruction will be supplemented with ESL audio and video material keyed to textbook units.

#### **\*Information Regarding The Maximum Number Of Times A Class Can Be Repeated**

Students who enroll in the ESL-Plus Course of Study move their individual levels or courses at their own rate. As long as a student is in good academic standing (as defined in our student policies), a student may be in a given level for an variable amount of time.

**Learning Activities:** lecture listening, note taking role-plays, pair work, small group work, practice grammatical structures in context, creative conversation practice, model and repeat, journals, process writing, peer review.

**Textbook:** *NorthStar: Listening & Speaking Level III and Reading & Writing Level III 3rd Edition*, (or comparable text). (*formerly 2nd Edition, NorthStar: Intermediate*).

#### 501.5 English as a Second Language Level V

**Prerequisite(s):** Placement Test or ESL IV.

**Course Description:** Prepares students to understand sustained conversations and instructions and to communicate independently in various situations. Students apply reading strategies and thinking skills. Students write and edit an organized piece of writing.

**Course Goals:** To expand students' ability to comprehend and respond timely and appropriately to natural, authentic spoken English; to use spoken English in a variety of social, non-academic and professional settings; to expand students' ability to comprehend and use grammatical structures in both written and spoken English in social, non-academic and professional contexts; to expand students' ability to comprehend, analyze and synthesize authentic texts; to deepen students' ability to organize information and produce summaries.

**Course Objectives:** Students will listen, speak, read and write at a high intermediate level. Students will communicate effectively and appropriately in standard American English.

**Student Learning Outcomes:** Students will be able to:

- State detailed descriptions of events, activities and experiences.
- Identify main ideas and details of extended conversations, lectures and broadcasts.
- Apply linguistic, socio-cultural and other background knowledge and strategies to understand fully the literal and implied intent of the speaker.
- Employ clarification strategies.
- Respond timely and appropriately using present, past and future and modal forms on social, professional and academic topics.
- Interpret short paragraphs on social, professional and academic topics.
- Speak so others can understand to recall and use sufficient wide-ranging vocabulary as well as control of basic grammar and a variety of sentence types.
- Predict meanings of unfamiliar vocabulary with contextual clues.
- Identify sequence of events in extensive readings and lectures.
- Examine and analyze authentic documents to locate specific detailed information.
- Convey ideas in an essay.
- Identify and modify written work for structural errors and mechanics, such as spelling, punctuation and capitalization.

#### **\*Instructional Methods:**

- This course is designed to be repeated in multiple, continuous, simultaneous 120 course-hour cycles toward proficiency progression of course stated outcomes & student personal proficiency goals as determined in consultation with Student Services Associates.
- An integrated cumulative skills development methodology increases language retention and fluency by stimulating students to make meaning from a new language through active learning activities. Recorded listening passages build on vocabulary and ideas from background material and exercises. Students work individually, in pairs, and in small groups on guided, linked activities built around each unit's theme. Instruction will be supplemented with ESL audio and video material keyed to textbook units.

### **\*Information Regarding The Maximum Number Of Times A Class Can Be Repeated**

Students who enroll in the ESL-Plus Course of Study move their individual levels or courses at their own rate. As long as a student is in good academic standing (as defined in our student policies), a student may be in a given level for an variable amount of time.

**Learning Activities:** lecture listening, note taking, pair work, small group work, practice grammatical structures in context, application activities with grammatical structures, creative conversation practice, journals, process writing, peer review, self-review.

**Textbook:** *NorthStar: Listening & Speaking and Reading & Writing Level IV, 3rd Edition*, (or comparable text). (formerly 2nd Edition, *NorthStar: High Intermediate*)

### ***501.6 English as a Second Language Level VI***

**Prerequisite(s):** ESL Placement Test or ESL V.

**Course Description:** Prepares students to understand and communicate independently in authentic situations. Students apply reading strategies and thinking strategies when reading materials from a variety of sources. Students write and present their ideas with fluency and clarity.

**Course Goals:** To enhance students' ability to comprehend, analyze and respond timely and appropriately to natural, authentic spoken English in a wide variety of settings; to broaden students' spoken English through the employment of appropriate stress, rhythm and intonation patterns; to enhance students' ability to comprehend and correctly use grammatical structures in social, non-academic and professional contexts; to expand students' ability to comprehend, analyze and synthesize authentic texts in a wide variety of settings; to deepen students' ability to organize information, produce summaries and evaluations; to increase students' ability to produce written language for a variety of settings.

**Course Objectives:** Students will listen, speak, read, and write using longer compound and complex sentences and more extensive vocabulary than expected of ESL V students. They will apply language skills at a higher level to make predictions, express and defend opinions, summarize information, retell a conversation, and compare and contrast.

**Student Learning Outcomes:** Students will be able to:

- State detailed descriptions of events, activities and experiences with both fluency and clarity.
- Identify main ideas, and supporting details of extended conversations, lectures and broadcasts.
- Employ discourse connectors.
- Use advanced strategies to repair gaps in understanding, to ask questions to deepen comprehension and to give feedback appropriate to the situation.
- Respond timely and appropriately using a wide variety of grammatical structures and vocabulary.
- Interpret readings on social, professional and non-academic topics.
- Predict content in readings.
- Identify events and activities in extensive readings and lectures.
- Examine, analyze and synthesize authentic documents to locate specific detailed information.
- Convey ideas in an organized essay with a clear thesis, supporting ideas and details.
- Identify and modify written work for organizational and grammatical errors and mechanics, such as spelling, punctuation and capitalization.

### **\*Instructional Methods:**

- This course is designed to be repeated in multiple, continuous, simultaneous 120 course-hour cycles toward proficiency progression of course stated outcomes & student personal proficiency goals as determined in consultation with Student Services Associates.
- An integrated cumulative skills development methodology increases language retention and fluency by stimulating students to make meaning from a new language through active learning activities. Recorded listening passages build on vocabulary and ideas from background material and exercises. Students work individually, in pairs, and in small groups on guided, linked activities built around each unit's theme. Instruction will be supplemented with ESL audio and video material keyed to textbook units.

### **\*Information Regarding The Maximum Number Of Times A Class Can Be Repeated**

Students who enroll in the ESL-Plus Course of Study move their individual levels or courses at their own rate. As long as a student is in good academic standing (as defined in our student policies), a student may be in a given level for an variable amount of time.

**Learning Activities:** lecture listening, note taking, pair work, small group work, practice grammatical structures in context, application activities with grammatical structures, creative conversation practice, journals, process writing, peer review, self-review.

**Textbook:** *NorthStar: Listening & Speaking and Reading & Writing Level V, 3rd Edition*, (or comparable text); *Longman Dictionary of American English now with Thesaurus*, 3<sup>rd</sup> or later edition, Pearson, 2004 (recommended). (*formerly 2nd Edition, NorthStar: Advanced*)

**TUITION:** \$480 per 120 hours    Certificate: English as a Second Language Level \_\_\_\_

### **502 Business English (120 hours cycles\*)**

**Prerequisite(s)/Co-requisite:** ESL Placement Test, English 501.5 or equivalent

**Course Description:** Business English teaches English language skills designed to help students communicate more successfully in a business and real world environment. The course emphasizes writing as a process of development that includes drafting, writing, editing, and reading that conveys the writer's intentions clearly and correctly.

**Course Goals:** To broaden students' ability to communicate clearly and fluently in a professional setting; to broaden students' spoken English through the employment of appropriate stress, rhythm and intonation patterns; to enhance students' ability to comprehend and correctly use grammatical structures appropriate in professional contexts; to expand students' ability to comprehend, analyze and synthesize workplace related texts; to increase students' ability to produce written documents required in a professional setting.

**Course Objectives:** Students will read intensively and write extensively. Students will develop vocabulary and clear pronunciation needed for a professional business setting.

**Student Learning Outcomes:** Students will be able to:

- Employ different patterns of development in writing.
- Recognize how context affects meaning, grammar, and other writing choices.
- Recognize and correctly use English grammar in context with an emphasis upon grammar and usage issues for ESL writers.
- Identify and use correct punctuation, mechanics, and spelling in business and real world writing.
- Identify and restate main ideas, implied meanings and supporting details.
- Make inferences and draw conclusions orally and in written form.

**\*Instructional Methods:** Students develop reading and writing skills from an integrated cumulative skills approach that increases language retention and fluency by stimulating students to create meaning in a new language through active learning activities. Longer reading passages and recorded listening passages, and videos build on vocabulary and ideas from background material and exercises. Students are guided through the writing process, followed by practice in context activities that allow them to apply each new writing concept to their own writing. Students work individually, in pairs, and in small groups on guided, linked activities built around each unit's theme.

\*This course is designed to be repeated in multiple, continuous, simultaneous 120 course-hour cycles toward proficiency progression of course stated outcomes & student personal proficiency goals as determined in consultation with Student Services Associates.

- An integrated cumulative skills development methodology increases language retention and fluency by stimulating students to make meaning from a new language through active learning activities. Recorded listening passages build on vocabulary and ideas from background material and exercises. Students work individually, in pairs, and in small groups on guided, linked activities built around each unit's theme. Instruction will be supplemented with ESL audio and video material keyed to textbook units.

### **\*Information Regarding The Maximum Number Of Times A Class Can Be Repeated**

Students who enroll in the ESL-Plus Course of Study move their individual levels or courses at their own rate. As long as a student is in good academic standing (as defined in our student policies), a student may be in a given level for an variable amount of time.

**Learning Activities:** lecture listening, note taking, pair work, small group work, practice grammatical structures in context, application activities with grammatical structures, creative conversation practice, journals, process writing, peer review, self-review.

**Textbooks:** *NorthStar: Reading and Writing 4, 3rd Edition.*, Pearson Education, (or comparable text).  
*Longman Dictionary of American English now with Thesaurus*, 3<sup>rd</sup> or later edition, Pearson, 2004 (recommended).

**TUITION:** \$480 Certificate: Business English

### **503 Advanced Reading & Writing (120 hour cycles\*)**

**Prerequisite(s)/Co-requisite:** Placement Test, English 501.6 (level VI) or equivalent.

**Course Description:** Advanced Reading and Writing develops advanced English language skills through close examination of reading passages, through objective discussion of reading, and through paragraph and short essay writing. The course develops personal, non-academic, and workplace advanced English reading, writing, and oral presentation skills at the multi-paragraph and document level.

**Course Goals:** To broaden students' ability to communicate clearly and fluently in a non-academic or professional setting; to broaden students' spoken English through the employment of appropriate stress, rhythm and intonation patterns; to enhance students' ability to comprehend and correctly use grammatical structures appropriate in non-academic and professional contexts; to expand students' ability to comprehend, analyze and synthesize non-academic and professional texts; to increase students' ability to produce written documents required in a non-academic and professional setting.

**Course Objectives:** Students will read intensively and write extensively to develop rhetorical patterns necessary for successful non-academic study. Students will give oral presentations that are organized and fluent.

**Student Learning Outcomes:** Students will be able to:

- Employ different patterns of development in writing.
- Recognize how context affects meaning, grammar, and other writing choices.
- Recognize and correctly use English grammar in context with an emphasis upon grammar and usage issues for ESL writers.
- Identify and use correct punctuation, mechanics, and spelling in non-academic and real world writing.
- Identify and restate main ideas, implied meanings and supporting details.
- Make inferences and draw conclusions both orally and in written form.

**\*Instructional Methods:** Students develop language skills from an integrated cumulative skills approach that increases retention and fluency by stimulating them to create meaning in a new language. Longer reading passages, recorded listening passages, and videos build on vocabulary and ideas from background material and exercises. Students are guided through the writing process, followed by practice in context activities to apply each new writing concept to their own writing. Students work individually, in pairs, and in small groups on guided, linked activities built around each unit's theme.

- *\*All courses are designed to be repeated in multiple, continuous, course-hour cycles that allow students to review and recycle in a non-linear manner toward proficiency progression of course stated outcomes & student personal proficiency goals as determined in consultation with Student Services Associates.*
- *This course is designed to be repeated in multiple, continuous, simultaneous 120 course-hour cycles toward proficiency progression of course stated outcomes & student personal proficiency goals as determined in consultation with Student Services Associates.*
- An integrated cumulative skills development methodology increases language retention and fluency by stimulating students to make meaning from a new language through active learning activities. Recorded listening passages build on vocabulary and ideas from background material and exercises. Students

work individually, in pairs, and in small groups on guided, linked activities built around each unit's theme. Instruction will be supplemented with ESL audio and video material keyed to textbook units.

**\*Information Regarding The Maximum Number Of Times A Class Can Be Repeated**

Students who enroll in the ESL-Plus Course of Study move their individual levels or courses at their own rate. As long as a student is in good academic standing (as defined in our student policies), a student may be in a given level for an variable amount of time.

**Learning Activities:** Note taking, pair work, small group work, practice grammatical structures in context, application activities with grammatical structures, creative conversation practice, journals, process writing, peer review, self-review.

**Textbooks:** *NorthStar 5 Reading and Writing Level 5, 3rd ed.*, Pearson Education, 2009 (or comparable text); *Longman Dictionary of American English now with Thesaurus, 3<sup>rd</sup>* or later edition, Pearson, 2004 (recommended).

TUITION: \$480 Certificate: Advanced Reading & Writing

***604 English For TASC Preparation (formerly High School Equivalency Diploma Preparation)***  
***(240 hour cycles\*)***

**Prerequisite(s):** English Level 5 or by individual placement through advisement

**Textbook:**

Mc-Graw Hill Education *Preparation for the TASC Test: The Most Authoritative Guide to the New High School Equivalency Exam*, by Kathy Zahler, Diane Zahler, Stephanie Muntone and Thomas Evangelist, 2015

**Course Description:** In this “English Through TASC” course students develop English language and foundational skills in:

- Language Arts: Reading,
- Language Arts: Writing,
- Social Studies,
- Science, and Mathematics

in order to prepare for TASC or GED exam in English.

**Course Goals:** This course will develop students’ English skills in:

- reading, writing, social studies, science, math

**Objectives:** Students will be able to:

- read English critically
- analyze English reading genres
- compose grammatically correct and concise English writing compositions
- interpret social studies English readings and illustrations
- apply critical English reading skills and scientific information to a variety of science fields
- solve math word problems in English using addition, subtraction, multiplication and division
- solve basic algebra and geometry equations in English
- perform pre and post GED English practice assessments

**Student Learning Outcomes:** By the end of the course, students will be able to:

- practice of TASC level skills in language arts: reading (including critical thinking, meaning, organization, and style in various genres);
- practice of TASC level skills in language arts: writing (including grammar and usage and independent writing components);
- review and practice of TASC level skills in social studies (including critical reading of various documents and formats requiring higher order thinking skills and interpretation of illustrations);
- review and practice of TASC level skills in science (including critical reading and application of scientific information in various fields of science);
- review and practice of TASC level skills in mathematics (including the four functions and applications with word problems and problem-solving through basic algebra and geometry); and
- pre-testing and post-testing practice assessments incorporating TASC-style testing formats in English
- A content-based approach is employed to provide a more natural way to motivate English language learning which accelerates language acquisition when students see a real-world purpose in learning something they are interested



in rather than language in isolation. Interactive and engaging student-centered activities to review TASC subjects followed by extensive exercises and practice with simulated and actual test material written by TASC test makers that includes feedback on written texts, including essays, as well as, personalized study plans and effective test taking-strategies which are premised on English language learning while having TASC content. .

**\*Instructional Methods:**

- This course is designed to be repeated in multiple, continuous, simultaneous 120 course-hour cycles toward proficiency progression of course stated outcomes & student personal proficiency goals as determined in consultation with Student Services Associates.
- An integrated cumulative skills development methodology increases language retention and fluency by stimulating students to make meaning from a new language through active learning activities. Recorded listening passages build on vocabulary and ideas from background material and exercises. Students work individually, in pairs, and in small groups on guided, linked activities built around each unit's theme. Instruction will be supplemented with ESL audio and video material keyed to textbook units.

**\*Information Regarding The Maximum Number Of Times A Class Can Be Repeated**

Students who enroll in the ESL-Plus Course of Study move their individual levels or courses at their own rate. As long as a student is in good academic standing (as defined in our student policies), a student may be in a given level for an variable amount of time.

**TUITION:** \$960    **Certificate:** TASC Preparation

***605 Pre-GED Foundation for GED Preparation (80 hour cycles\*)***

**Prerequisite:** Placement test.

**Textbook:** *Complete Pre-GED: A Comprehensive Review of the Skills Necessary for GED Study.* McGraw Hill Contemporary, 2003 or comparable edition.

**Course Description:** This “English Through Pre-GED” course is designed to provide the English language foundation for GED preparation in the areas of Language Arts: Reading, Language Arts: Writing, Social Studies, Science, and Mathematics.

**Course Goals:** This course develops the student’s English language and test-taking skills in:

- English reading
- English writing
- social studies in English
- science in English and
- math in English

**Objectives:** By the end of the course, students will have received:

- review and practice of English language pre-GED level skills in language arts: reading (including critical thinking, meaning, organization, and style in various genres);
- review and practice of pre-GED level skills in language arts: writing (including English grammar and usage and independent writing components);
- review and practice of pre-GED level English language skills in social studies (including critical reading of various documents and formats requiring higher order thinking skills and interpretation of illustrations);
- review and practice of pre-GED level skills in science (including critical reading and application of scientific information in English in various fields of science);
- review and practice of pre-GED level skills in English in mathematics (including the four functions and applications with word problems and problem-solving through basic algebra and geometry); and
- pre-testing and post-testing practice assessments incorporating GED-style testing formats in English.

**Student Learning Outcomes:** By the end of the course, students will be able to:

- practice of pre-GED level skills in language arts: reading (including critical thinking, meaning, organization, and style in various genres);
- practice of pre-GED level skills in language arts: writing (including grammar and usage and independent writing components);
- review and practice of pre-GED level skills in social studies (including critical reading of various documents and formats requiring higher order thinking skills and interpretation of illustrations);

- review and practice of pre-GED level skills in science (including critical reading and application of scientific information in various fields of science);
- review and practice of pre-GED level skills in mathematics (including the four functions and applications with word problems and problem-solving through basic algebra and geometry); and
- pre-testing and post-testing practice assessments incorporating GED-style testing formats

**\*Instructional Methods:**

- This course is designed to be repeated in multiple, continuous, simultaneous 80 course-hour cycles toward proficiency progression of course stated outcomes & student personal proficiency goals as determined in consultation with Student Services Associates.
- A content-based approach is employed to provide a more natural way to motivate English language learning which accelerates language acquisition when students see a real-world purpose in learning something they are interested in rather than language in isolation. Classroom review of pre-GED skills followed by extensive exercises and practice with periodic pre- and post-testing and assessment which are premised on English language learning while having pre-GED content.
- An integrated cumulative skills development methodology increases language retention and fluency by stimulating students to make meaning from a new language through active learning activities. Recorded listening passages build on vocabulary and ideas from background material and exercises. Students work individually, in pairs, and in small groups on guided, linked activities built around each unit's theme. Instruction will be supplemented with ESL audio and video material keyed to textbook units.

**\*Information Regarding The Maximum Number Of Times A Class Can Be Repeated**

Students who enroll in the ESL-Plus Course of Study move their individual levels or courses at their own rate. As long as a student is in good academic standing (as defined in our student policies), a student may be in a given level for an variable amount of time.

**TUITION:** \$320    **Certificate:** Pre-GED Foundation for GED Preparation

***610 English For TOEFL Exam Preparation (80 hour cycles\*)***

**Prerequisite(s):** English Level 5 or by individual placement through advisement

**Textbooks:** Deborah Phillips, Longman Preparation Course For The TOEFL Test: Next Generation iBT, 2<sup>nd</sup> ed. Pearson, 2007 (or comparable text). Longman Dictionary of American English now with Thesaurus, 3<sup>rd</sup> or later edition, Pearson, 2004 (recommended).

**Course Description:** In this “English Through TOEFL Prep” course students develop English language skills. The course helps prepare advanced ESL students for the TOEFL through the application of advanced integrated English language skills tested by the Next Generation iBT.

*This course is not designed or intended to prepre students for college-level, academic work.*

**Course Goals:** This course will prepare students’ English to take the TOEFL exam

**Objectives:** Students will be able to:

- apply TOEFL-like English language skills
- indicate familiarity with Next Generation iBT test-taking strategies
- recognize TOEFL-like test conditions through practice tests

**Student Learning Outcomes:** By the end of the course, students will be able to:

- strengthen the application of integrated English language skills in TOEFL-like contexts.
- provide understanding of and experience with TOEFL Next Generation iBT test-taking strategies with its emphasis upon integrated English language skills testing.
- provide practice test taking under TOEFL-like conditions

**\*Instructional Methods:**

- This course is designed to be repeated in multiple, continuous, simultaneous 80 course-hour cycles toward proficiency progression of course stated outcomes & student personal proficiency goals as determined in consultation with Student Services Associates.

- A content-based approach is employed to provide a more natural way to motivate English language learning which accelerates language acquisition when students see a real world purpose in learning something they are interested in rather than language in isolation. Classroom instruction includes timed and untimed practice exercises similar to TOEFL questions and situations. Students listen to pre-recorded listening material and have supplementary CD ROM material with additional practice exercises and two actual TOEFL iBT tests which are premised on English language learning while having TOEFL iBT content.
- An integrated cumulative skills development methodology increases language retention and fluency by stimulating students to make meaning from a new language through active learning activities. Recorded listening passages build on vocabulary and ideas from background material and exercises. Students work individually, in pairs, and in small groups on guided, linked activities built around each unit's theme. Instruction will be supplemented with ESL audio and video material keyed to textbook units.

**\*Information Regarding The Maximum Number Of Times A Class Can Be Repeated**

Students who enroll in the ESL-Plus Course of Study move their individual levels or courses at their own rate. As long as a student is in good academic standing (as defined in our student policies), a student may be in a given level for an variable amount of time.

**TUITION:** \$320 **Certificate:** TOEFL Examination Preparation

***940 English for Introduction to Word for MAC 80 hour cycles\****

**Prerequisite(s):** English Level 5 or by individual placement through advisement

**Textbooks:** Suzanne Weixel, *Learning Microsoft Windows XP*, DDC Publishing (or comparable text).

**Course Description:** In this “English Through MS Windows” course students develop English language skills needed to successfully understand and complete concepts, features, functions, and applications in Windows.

*This course is not intended to provide instruction which will result in the student's acquisition of occupational skills. Placement assistance by the school is not available for this course.*

**Course Goals:** This course will develop students’: skills using Windows functions and features in English

**Objectives:** Students will be able to:

- interpret textbook readings and directions in English
- use clear concise English to ask questions
- explain Windows procedures using clear concise English
- discuss the basics of Windows operating system
- navigate Windows toolbar and menus to customize projects

**Student Learning Outcomes:** By the end of the course, students will be able to:

- read about Windows in English and understand what is being discussed or described;
- read and follow directions in English when practicing textbook exercises;
- ask questions concerning concepts and implementation;
- explain to others procedures used or results obtained;
- understand the basics of the Windows operating system;
- understand how to navigate toolbars and use menus to customize Windows; and
- understand how to use other Windows features.

**\*Instructional Methods:**

- *This course is designed to be repeated in multiple, continuous, simultaneous 80 course-hour cycles toward proficiency progression of course stated outcomes & student personal proficiency goals as determined in consultation with Student Services Associates.*
- A content-based approach is employed to provide a more natural way to motivate English language learning which accelerates language acquisition when students see a real-world purpose in learning something they are interested in rather than language in isolation. Classes include theory and development sessions followed by hands-on practice and drills. Students will complete periodic summary exercises that require application of all skills learned to date. Each student will create a portfolio of finished output which are premised on English language learning while having Microsoft Windows content.

- An integrated cumulative skills development methodology increases language retention and fluency by stimulating students to make meaning from a new language through active learning activities. Recorded listening passages build on vocabulary and ideas from background material and exercises. Students work individually, in pairs, and in small groups on guided, linked activities built around each unit's theme. Instruction will be supplemented with ESL audio and video material keyed to textbook units.

**\*Information Regarding The Maximum Number Of Times A Class Can Be Repeated**

Students who enroll in the ESL-Plus Course of Study move their individual levels or courses at their own rate. As long as a student is in good academic standing (as defined in our student policies), a student may be in a given level for an variable amount of time.

**TUITION:** \$320    **Certificate:** Introduction to Using Microsoft Windows

***950 English For Using Excel (80 hour cycles\*)***

**PREREQUISITE:** English Level 5 or by individual placement through advisement

**Textbook:**

Steve Schwartz, *Microsoft Office 2008 (Part III, Chapters 9 to 16)*, Prachtree Press, 2008 (or comparable text).

**COURSE DESCRIPTION:** In this “English Through Excel” course students develop English language skills needed to successfully execute operations in Excel. This course introduces students to English language spreadsheet concepts, features, functions, and applications using Excel.

*This course is not intended to provide instruction which will result in the student's acquisition of occupational skills.*

*Placement assistance by the school is not available for this course.*

**Course Goals:** This course will develop students’: English skills to navigate Excel in English

**OBJECTIVES:** Students will be able to:

- analyze and demonstrate use of Excel spreadsheets in English
- identify uses of Excel in everyday situations in English
- use Excel toolbars and menus to customize projects
- apply other Excel features

**Student Learning Outcomes:** By the end of the course, students will be able to:

- use English spreadsheets, in general, and Excel, in particular;
- understand in English how Excel can be applied to real world situations;
- navigate English toolbars and use English menus to customize Excel; and
- use other Excel features in English.

**\*Instructional Methods:**

- *This course is designed to be repeated in multiple, continuous, simultaneous 80 course-hour cycles toward proficiency progression of course stated outcomes & student personal proficiency goals as determined in consultation with Student Services Associates.*
- A content-based approach is employed to provide a more natural way to motivate English language learning which accelerates language acquisition when students see a real-world purpose in learning something they are interested in rather than language in isolation. Classes include hands-on practice and drills. Students will complete periodic summary exercises that require application of all skills learned to date which are premised on English language learning while having Excel content. Each student will create a portfolio of finished output.
- An integrated cumulative skills development methodology increases language retention and fluency by stimulating students to make meaning from a new language through active learning activities. Recorded listening passages build on vocabulary and ideas from background material and exercises. Students work individually, in pairs, and in small groups on guided, linked activities built around each unit's theme. Instruction will be supplemented with ESL audio and video material keyed to textbook units.

**\*Information Regarding The Maximum Number Of Times A Class Can Be Repeated**

Students who enroll in the ESL-Plus Course of Study move their individual levels or courses at their own rate. As long as a student is in good academic standing (as defined in our student policies), a student may be in a given level for an variable amount of time.

**TUITION:** \$320    **Certificate:** Using Excel for Windows

## ***955 English For Using the Internet (80 hour cycles \*)***

**Prerequisite(s):** English Level 5 or by individual placement through advisement

**Textbooks:** Don Mayo and Catherine Skintik, *Learning the Internet: Fundamentals, Projects, and Exercises*, DDC Publishing, (or comparable text).

**Course Description:** In this “English Through Using The Internet” course students develop English language skills needed to be successful with the structure of the Internet. The course provides English direction and practice in using the Internet correctly to obtain valid information for personal, for business, and for academic use. The course emphasizes good searching skills and includes practice in developing a personal English web page.

**This course is not intended to provide instruction which will result in the student's acquisition of occupational skills. Placement assistance by the school is not available for this course.**

**Course Goals:** This course will develop students’ ability to:

- read and interpret internet basics through written English
- read and interpret textbook exercises in written English
- verbally explain internet procedures in English
- distinguish between valid and invalid internet information
- create a personal web page

**Objectives:** Students will be able to:

- read and interpret internet basics through written English
- read and interpret textbook exercises in written English
- verbally explain internet procedures in English
- distinguish between valid and invalid internet information
- create a personal web page
- demonstrate use of the World Wide Web and its features.

**Student Learning Outcomes:** By the end of the course, students will be able to:

- read about Internet basics and understand what is being discussed or described;
- read and follow directions when practicing textbook exercises;
- ask English questions concerning concepts and implementation;
- explain procedures used or results obtained;
- understand in English the basics of Internet searching that produces valid information for personal, for business, and for academic use;
- understand how to create a personal web page; and
- understand in English how to use other World Wide Web features.

### **\*Instructional Methods:**

- **This course is designed to be repeated in multiple, continuous, simultaneous 80 course-hour cycles toward proficiency progression of course stated outcomes & student personal proficiency goals as determined in consultation with Student Services Associates.**
- A content-based approach is employed to provide a more natural way to motivate English language learning which accelerates language acquisition when students see a real-world purpose in learning something they are interested in rather than language in isolation. Classes include development and theory sessions followed by hands-on practice and drills. Students will complete periodic summary exercises that require application of all skills learned to date which are premised on English language learning while having Using the Internet content. Each student will create a portfolio of finished output.
- An integrated cumulative skills development methodology increases language retention and fluency by stimulating students to make meaning from a new language through active learning activities. Recorded listening passages build on vocabulary and ideas from background material and exercises. Students work individually, in pairs, and in small groups on guided, linked activities built around each unit's theme. Instruction will be supplemented with ESL audio and video material keyed to textbook units.

### **\*Information Regarding The Maximum Number Of Times A Class Can Be Repeated**

Students who enroll in the ESL-Plus Course of Study move their individual levels or courses at their own rate. As long as a student is in good academic standing (as defined in our student policies), a student may be in a given level for an variable amount of time.

**TUITION:** \$320    **Certificate:** Using the Internet

### ***965 English For Using Microsoft PowerPoint (80 hour cycles\*)***

**Prerequisite(s):** English Level 5 or by individual placement through advisement

**Textbooks:** Lisa A. Buck, *Learning Adobe Photoshop CS2*, DDC Publishing, (or comparable text).

**Course Description:** In this “English Through PhotoShop” course students develop English language skills needed to be successful with PhotoShop. Students will learn how to work with PhotoShop images from a variety of real world situations and sources.

*This course is not intended to provide instruction which will result in the student's acquisition of occupational skills. Placement assistance by the school is not available for this course.*

**Course Goals:** This course will develop students’ English knowledge and skills by using PhotoShop.

**Objectives:** Students will be able to:

- Read and interpret written PhotoShop directions for textbook exercises in English
- Express questions clearly and concisely regarding PhotoShop
- Explain PhotoShop procedures using clear concise English
- Discuss the basics of the PhotoShop program
- Use the basics of PhotoShop from a variety of real world situations and sources to design, develop and customize images

**Student Learning Outcomes:** By the end of the course, students will be able to:

- Read about PhotoShop basics and understand what is being discussed or described;
- Read and follow directions when practicing textbook exercises;
- Ask questions in English concerning concepts and implementation;
- Explain procedures used or results obtained regarding the basics of PhotoShop;
- Write simple explanations of procedures used or results obtained
- Use PhotoShop applications to design, develop, and customize images;
- Employ the basics of creating PhotoShop images from sources;
- Apply PhotoShop to real world situations;
- Use navigation toolbars and menus to customize PhotoShop; and
- Use other PowerPoint features.

### **\*Instructional Methods:**

- *This course is designed to be repeated in multiple, continuous, simultaneous 80 course-hour cycles toward proficiency progression of course stated outcomes & student personal proficiency goals as determined in consultation with Student Services Associates.*
- A content-based approach is employed to provide a more natural way to motivate English language learning which accelerates language acquisition when students see a real-world purpose in learning something they are interested in rather than language in isolation. Classes include hands-on practice and drills. Students will complete periodic summary exercises that require application of all skills learned to date which are premised on English language learning while having PhotoShop content. Each student will create a portfolio of finished output.
- An integrated cumulative skills development methodology increases language retention and fluency by stimulating students to make meaning from a new language through active learning activities. Recorded listening passages build on vocabulary and ideas from background material and exercises. Students work individually, in pairs, and in small groups on guided, linked activities built around each unit's theme. Instruction will be supplemented with ESL audio and video material keyed to textbook units.

### **\*Information Regarding The Maximum Number Of Times A Class Can Be Repeated**

Students who enroll in the ESL-Plus Course of Study move their individual levels or courses at their own rate. As long as a student is in good academic standing (as defined in our student policies), a student may be in a given level for an variable amount of time.

**TUITION:** \$320 Certificate: Using Microsoft PowerPoint

### ***975 English For Using Adobe PhotoShop (160 hour cycles\*)***

**Prerequisite(s):** English Level 5 or by individual placement through advisement

**Textbooks:** Lisa A. Buck, *Learning Adobe Photoshop CS2*, DDC Publishing, (or comparable text).

**Course Description:** In this “English Through PhotoShop” course students develop English language skills needed to be successful with PhotoShop. Students will learn how to work with PhotoShop images from a variety of real world situations and sources.

**This course is not intended to provide instruction which will result in the student's acquisition of occupational skills. Placement assistance by the school is not available for this course.**

**Course Goals:** This course will develop students’ English knowledge and skills by using PhotoShop.

**Objectives:** Students will be able to:

- Read and interpret written PhotoShop directions for textbook exercises in English
- Express questions clearly and concisely regarding PhotoShop
- Explain PhotoShop procedures using clear concise English
- Discuss the basics of the PhotoShop program
- Use the basics of PhotoShop from a variety of real world situations and sources to design, develop and customize images

**Student Learning Outcomes:** By the end of the course, students will be able to:

- Read about PhotoShop basics and understand what is being discussed or described;
- Read and follow directions when practicing textbook exercises;
- Ask questions in English concerning concepts and implementation;
- Explain procedures used or results obtained regarding the basics of PhotoShop;
- Write simple explanations of procedures used or results obtained
- Use PhotoShop applications to design, develop, and customize images;
- Employ the basics of creating PhotoShop images from sources;
- Apply PhotoShop to real world situations;
- Use navigation toolbars and menus to customize PhotoShop; and
- Use other PowerPoint features.

### **\*Instructional Methods:**

- **This course is designed to be repeated in multiple, continuous, simultaneous 160 course-hour cycles toward proficiency progression of course stated outcomes & student personal proficiency goals as determined in consultation with Student Services Associates.**
- A content-based approach is employed to provide a more natural way to motivate English language learning which accelerates language acquisition when students see a real-world purpose in learning something they are interested in rather than language in isolation. Classes include hands-on practice and drills. Students will complete periodic summary exercises that require application of all skills learned to date which are premised on English language learning while having PhotoShop content. Each student will create a portfolio of finished output.
- An integrated cumulative skills development methodology increases language retention and fluency by stimulating students to make meaning from a new language through active learning activities. Recorded listening passages build on vocabulary and ideas from background material and exercises. Students work individually, in pairs, and in small groups on guided, linked activities built around each unit's theme. Instruction will be supplemented with ESL audio and video material keyed to textbook units.

### **\*Information Regarding The Maximum Number Of Times A Class Can Be Repeated**

Students who enroll in the ESL-Plus Course of Study move their individual levels or courses at their own rate. As long as a student is in good academic standing (as defined in our student policies), a student may be in a given level for an variable amount of time.

**TUITION:** \$640 Certificate: Using Adobe Photoshop

## ***990 English For Introduction to the MAC (80 hour cycles\*)***

**Prerequisite(s):** English Level 5 or by individual placement through advisement

**Textbooks:**

*The Little MAC Book: Snow Leopard Edition* by Robin Williams, Peachpit Press, 2010 (or comparable text).

**Other Instructional Material:** Apple's on-line tutorials at: <http://www.apple.com/support/mac101/>

**Course Description:** In this "English Through Introduction To MAC" course students develop English language skills to be successful with the Mac OSX operating system and Mac computers.

*This course is not intended to provide instruction which will result in the student's acquisition of occupational skills.*

*Placement assistance by the school is not available for this course.*

**Course Goals:** This course will explain features and basic usage of the MAC operating system in English

**Objectives:** Students will be able to:

- interpret English readings and verbal explanations regarding Macintosh computers
- use the Apple support site to locate answers to specific questions
- create questions in English about concepts or procedures
- explain procedures and results
- identify the basics of Macintosh's OS X v 10.6 Snow Leopard operating system
- navigate Mac toolbars and menus
- use Mac features

**Student Learning Outcomes:** By the end of the course, students will be able to:

- read in English about Macintosh computers and understand what is being discussed or described;
- use the Apple Macintosh English support site to use Mac computers effectively and efficiently and to answer specific questions;
- read and follow directions in English when practicing exercises;
- ask questions in English concerning concepts and implementation;
- explain to others procedures used or results obtained;
- understand the basics of Macintosh's OS X v10.6 Snow Leopard operating system in English;
- to understand how to navigate English toolbars and use English menus to customize the Mac; and
- to understand how to use other Mac features in English.

**\*Instructional Methods:**

- *This course is designed to be repeated in multiple, continuous, simultaneous 80 course-hour cycles toward proficiency progression of course stated outcomes & student personal proficiency goals as determined in consultation with Student Services Associates.*
- A content-based approach is employed to provide a more natural way to motivate English language learning which accelerates language acquisition when students see a real-world purpose in learning something they are interested in rather than language in isolation. Classes include hands-on practice and drills. Students will complete periodic summary exercises that require application of all skills learned to date which are premised on English language learning while having introduction to MAC content. Each student will create a portfolio of finished output.
- An integrated cumulative skills development methodology increases language retention and fluency by stimulating students to make meaning from a new language through active learning activities. Recorded listening passages build on vocabulary and ideas from background material and exercises. Students work individually, in pairs, and in small groups on guided, linked activities built around each unit's theme. Instruction will be supplemented with ESL audio and video material keyed to textbook units.

**\*Information Regarding The Maximum Number Of Times A Class Can Be Repeated**

Students who enroll in the ESL-Plus Course of Study move their individual levels or courses at their own rate. As long as a student is in good academic standing (as defined in our student policies), a student may be in a given level for an variable amount of time.

**TUITION:** \$320      **Certificate:** Introduction to the MAC



## ***995 English For Switching to the Mac 80 hour cycles\****

**Prerequisite(s):** Any Microsoft Office application course.

**Textbooks:** *The Little MAC Book: Snow Leopard Edition* by Robin Williams, Peachpit Press, 2010 (or comparable text).

**Course Description:** In this “English Through Switching To MAC” course students develop English language skills needed to successfully transition from a Windows PC to a Mac OS environment.

*This course is not intended to provide instruction which will result in the student's acquisition of occupational skills.*

*Placement assistance by the school is not available for this course.*

**Course Goals:** This course will develop students’ English skills in using Mac functions and features.

**Objectives:** Students will be able to:

- Read and interpret Mac basics through written English
- Read and interpret textbook exercises in written English
- Use clear concise English to ask questions
- Explain Mac procedures using clear concise English
- Discuss the basics of Mac program in English

**Student Learning Outcomes:** By the end of the course, students will be able to:

- Read in English about Mac and understand what is being discussed or described;
- Read and interpret in English Mac support site to use Mac computers effectively and efficiently;
- Follow directions in English when practicing textbook exercises;
- Ask questions in English concerning concepts and implementation;
- Explain to others in English procedures used or results obtained;
- Understand the basics of Mac operating system described in English;
- Use English navigation toolbars and menus to customize the Mac;
- Use other Mac features in English

### **\*Instructional Methods:**

- *This course is designed to be repeated in multiple, continuous, simultaneous 80 course-hour cycles toward proficiency progression of course stated outcomes & student personal proficiency goals as determined in consultation with Student Services Associates.*
- A content-based approach is employed to provide a more natural way to motivate English language learning which accelerates language acquisition when students see a real-world purpose in learning something they are interested in rather than language in isolation. Classes include hands-on practice and drills. Students will complete periodic summary exercises that require application of all skills learned to date which are premised on English language learning while having switching to MAC content. Each student will create a portfolio of finished output.
- An integrated cumulative skills development methodology increases language retention and fluency by stimulating students to make meaning from a new language through active learning activities. Recorded listening passages build on vocabulary and ideas from background material and exercises. Students work individually, in pairs, and in small groups on guided, linked activities built around each unit's theme. Instruction will be supplemented with ESL audio and video material keyed to textbook units.

### **\*Information Regarding The Maximum Number Of Times A Class Can Be Repeated**

Students who enroll in the ESL-Plus Course of Study move their individual levels or courses at their own rate. As long as a student is in good academic standing (as defined in our student policies), a student may be in a given level for an variable amount of time.

**TUITION:** \$320      Certificate: Switching to the MAC

## ***1000 English For Using Apple iMovie 80 hour cycles\****

**Prerequisite(s):** English Level 5 or by individual placement through advisement

**Textbooks:**

*iMovie & iDVD: The Missing Manual*, David Pogue and Aaron Miller, O’Reilly Media/Pogue Press: 2009 (or recent edition).

**Other Instructional Aids:**

Apple's on-line tutorials, *iMovie* and *iDVD*, [www.apple.com/ilife/imovie](http://www.apple.com/ilife/imovie), [www.apple.com/ilife/iphoto](http://www.apple.com/ilife/iphoto), [www.apple.com/ilife/idvd](http://www.apple.com/ilife/idvd)

**Course Description:** In this "English Through iMovie" course students develop English language skills to be successful with Apple iMovie. Students will learn how to create movies on the computer using a variety of media and to output their movies to tape or disk, send them via e-mail, or post them to a web site.

**This course is not intended to provide instruction which will result in the student's acquisition of occupational skills. Placement assistance by the school is not available for this course.**

**Course Goals:** This course will develop students': knowledge and usage of iMovie

**Objectives:** Students will be able to:

- read and interpret English written iMovie directions for textbook exercises
- interpret documents and situations written in English to design, develop, and customize iMovie applications for various situations
- express question in English regarding iMovie
- write simple iMovie procedures and results in English
- explain the design and content of iMovie and iDVD
- use the basics of gathering video assets, trimming and organizing them, garnishing them with title tracks, special effects, and transitions.
- modify and use iMovie to create stand-alone movies; and output their created videos to tape or disk, e-mail, or the Web.

**Student Learning Outcomes:** By the end of the course, students will be able to:

- read in English about video editing software and iMovie and understand what is being discussed or described IN English;
- read and follow English directions when practicing textbook exercises;
- read English documents and descriptions of situations and decide in English how to use iMovie applications to design, develop, and customize video compositions;
- ask questions in English concerning concepts and implementation;
- write simple English explanations of procedures used or results obtained;
- explain in English the design and content of iMovie and iDVD presentations; and
- understand the basics of gathering video assets; of trimming and organizing them; of garnishing them with title tracks, special effects, and transitions; of using iMovie to create stand-alone English movies; and of outputting their created videos to tape or disk, e-mail, or the Web.

#### **\*Instructional Methods:**

- **This course is designed to be repeated in multiple, continuous, simultaneous 80 course-hour cycles toward proficiency progression of course stated outcomes & student personal proficiency goals as determined in consultation with Student Services Associates.**
- A content-based approach is employed to provide a more natural way to motivate English language learning which accelerates language acquisition when students see a real-world purpose in learning something they are interested in rather than language in isolation. Classes include hands-on practice and drills. Students will complete periodic summary exercises that require application of all skills learned to date which are premised on English language learning while having iMovie content. Each student will create, develop, and output a video production and share it with other students, according to guidelines provided by the instructor.
- An integrated cumulative skills development methodology increases language retention and fluency by stimulating students to make meaning from a new language through active learning activities. Recorded listening passages build on vocabulary and ideas from background material and exercises. Students work individually, in pairs, and in small groups on guided, linked activities built around each unit's theme. Instruction will be supplemented with ESL audio and video material keyed to textbook units.

#### **\*Information Regarding The Maximum Number Of Times A Class Can Be Repeated**

Students who enroll in the ESL-Plus Course of Study move their individual levels or courses at their own rate. As long as a student is in good academic standing (as defined in our student policies), a student may be in a given level for an variable amount of time.

**TUITION:** \$320      Certificate: Using Apple iMovie

## V. ADMISSIONS & FINANCIAL AID



### ***Admissions Requirements***

The Institute welcomes applications from individuals seriously interested in acquiring improved English Language skills. Applicants are accepted without regard to race, color, national origin, creed, sex, or physical handicaps.

Applicants for admission must be beyond the age of compulsory schooling.

Applicants for admission to individual courses need not be high school graduates.

The Institute does not engage the services of outside recruiters or agents. All students or their family or a friend must contact the Institute directly in order to receive firsthand orientation on important policies and procedures. No person or persons have been authorized to represent the Institute off site.

### ***Admissions Procedures***

Applicants may complete the Institute's "Application For Admission" and return it to the school or avail themselves of the Institute's "one-step, on-the-spot" Admissions process. In the case of the "one-step, on-the-spot" Admissions process, the student provides all needed eligibility information in person to a Faculty Student-Services Associate immediately prior to enrollment.

An interview is conducted. The purpose of the interview is to explore the applicant's goals and abilities as they relate to the Institute's courses.

Arrangements will be jointly made by the applicant and the Institute to forward to the Institute the applicant's official high school transcript of grades. The Institute provides a release form for this purpose. For high school graduates or those with high school equivalency, the institution shall have on file evidence that the student has received a high school diploma or its equivalent. A signed statement by the student is acceptable documentation.

Upon acceptance the applicant and Institute complete an "Enrollment Agreement." The Agreement specifies all costs, payment methods, and courses of instruction.

Although a personal interview is required of all applicants, out-of-town or foreign students who register by mail and meet other requirements may schedule the interview upon their arrival in New York. All interviews must be completed prior to the start of classes.

### ***Advanced Standing***

Required courses may be waived for students who can demonstrate proficiency in the competencies taught in those courses, based on OBJECTIVE performance criteria. Documentation of how students demonstrate proficiency in competencies is maintained in the student's file.

A student given advanced standing must complete the total approved hours for the program unless an amended enrollment agreement is signed for the remaining hours.

Advanced standing does not imply "transfer hours" which are defined below.

### ***Transfer Of Hours***

Students who request transfer of hours are required to present transcripts of previous studies for evaluation. A transfer of hours may be granted for hours completed in an approved course or program from a licensed or registered school or a registered program at a degree granting institution or in recognized post-secondary institutions, at the discretion of the President or his designee, after an evaluation of the student's transcript.

A student given transfer of hours has only to complete the number of approved instructional hours for the program minus the number of transfer hours granted by the Institute.

The President or his designee reserves the right to test students before a final determination is made. Tuition adjustments will be made as required.

## ***Limits of Study for B-2 Nonimmigrants***

The following guidance is provided in a [Department of Justice memorandum](#):

"The prohibition against beginning a course of study prior to obtaining Service approval of a change of nonimmigrant status request is limited to B-1 or B-2 nonimmigrants. The term "course of study;" implies a focused program of classes, such as a full-time course load leading to a degree or, in the case of a vocational student, some type of certification. Casual, short-term classes that are not the primary purpose of the alien's presence in the United States, such as a single English language or crafts class, would not constitute a "course of study." Courses with more substance or that teach a potential vocation, such as flight training, would be considered part of a "course of study" and thus would require approval of a student status; . . . "

## ***Student Visa Applications (Form / I-20)***

The Institute is authorized under federal law to enroll non-immigrant foreign students. A foreign student may register by mail, email, online or through a relative or friend in the United States. Please provide the following:

- a copy of the passport page (or national identity document) which shows student's full name, birth date, country of birth and citizenship
- address in the United States
- permanent address abroad
- duration of initial session course of study desired
- information showing the student's means of support for an academic term.
- payment of the required tuition deposit.  
(This amount is deducted from the total tuition for the course selected.)
- certificate or transcript from the last school attended. Transcripts and certificates are not returned.

The Institute will complete the Form I-20 (Certificate of Eligibility) and send it to the student for presentation to the proper consular officials. Upon providing this information, the student will receive a copy of the Enrollment Agreement for his/her signature. A copy of the Enrollment Agreement is retained by the Institute.

## ***Financial Assistance***

**Pay-As-You-Learn Plan.** The Institute seeks to make its courses of study affordable to the greatest number of students. In certain circumstances, a Tuition Payment Plan makes it possible for students to "pay as they attend" without interest charges.

**Average Cost of Attendance.** The following represents the average cost for a student to attend the Institute for one calendar year.

<b>EXPENSE ITEMS</b>	<b>Commuting from parents home No dependents</b>	<b>All others</b>
Tuition & Fees	\$5,450	\$5,450
Books & Supplies	600	600
Room & Board	1,500	4,331
Personal Expenses	1,625	2,444
Transportation	546	546
<b>TOTAL</b>	<b>\$9,721</b>	<b>\$13,371</b>

## ***Waiver Criteria***

Students may be granted a waiver of "good academic standing" standards. The waiver is not automatic. The waiver is granted only by the President or his designee under the following conditions, if it is determined that there is a reasonable expectation that the student will meet future requirements, if said waiver is in the student's best interest, and if:

- the waiver is discussed with the student and signed agreement obtained;
- the reason for student's failure to meet requirements is assessed & evaluated;
- a complete written record of waiver, evaluation findings, and determination becomes a part of the student's record; and
- only one waiver may be granted to a student.

## Refund Policy

The Institute adheres to the refund policy on the Enrollment Agreement given to students at registration. It reads as follows:

I. AFTER SIGNING THIS AGREEMENT BUT BEFORE STARTING CLASS THE SCHOOL KEEPS: the non-refundable registration fee. THE LESSER OF 10% of tuition or ONE HUNDRED DOLLARS (\$100) per course or program. (Registration fee is additional to tuition but is deducted from last payment.)

II. AFTER STARTING CLASSES THE SCHOOL KEEPS:

A. The non-refundable registration fee (THE LESSES of 10% of tuition PER COURSE or Program) or ONE HUNDRED DOLLAR (\$100) registration fee per course or program PLUS the stated cost of such textbooks, tools, materials, supplies, etc. as have been issued by the school and accepted by the student, PLUS: The school keeps tuition

1. FOR QUARTER ENROLLMENTS (all courses): If termination occurs week #

1st Quarter of 1st Enrollment		Quarter 1 or 2 * of subsequent enrollments	subsequent Quarters
week 1	0%	0%	25%
week 2	20%	25%	50%
week 3	30%	50%	75%
week 4	40%	75%	100%
week 5	50%	100%	100%
week 6	50%	100%	100%
week 7	60%	100%	100%
week 8	100%	100%	100%

2. FOR First-Time Students in TERM ENROLLMENTS (all programs), The school keeps:

For withdrawal in:	Term 1	2nd Term	Subsequent Terms *
Week #1	0% of the term tuition	*	20% of the term tuition
Week #2	20% of the term tuition	*	35% of the term tuition
Week #3	20% of the term tuition	*	50% of the term tuition
Week #4	30% of the term tuition	*	70% of the term tuition
Week #5	40% of the term tuition	*	100% of the term tuition
Week #6	40% of the term tuition	*	100% of the term tuition
Week #7	50% of the term tuition	*	100% of the term tuition
Week #8	50% of the term tuition	*	100% of the term tuition
Week #9	60% of the term tuition	*	100% of the term tuition
Week #10	100% of the term tuition	*	100% of the term tuition

3. FOR Non-First Time TERM ENROLLMENTS students (all programs), The school keeps:

For withdrawal in	Term 1	2nd Term	Subsequent Terms *
Week #1	0% of the term tuition	*	20% of the term tuition
Week #2	20% of the term tuition	*	35% of the term tuition
Week #3	35% of the term tuition	*	50% of the term tuition
Week #4	50% of the term tuition	*	70% of the term tuition
Week #5	70% of the term tuition	*	100% of the term tuition
Week #6	100% of the term tuition	*	100% of the term tuition

\* If the student withdraws in the second term, the school must use the first term schedule unless the school demonstrates that no significant educational change occurred in the program as of the student's last date of attendance. Significant Educational Change is defined as non-functioning equipment which adversely affects the student's program, material change in the student's schedule as agreed to at enrollment, substitution of teacher in a course after instruction begins if the teacher does not possess necessary language skills in approved language of instruction in order to effectively communicate subject matter to students, or significant increase in student-teacher ratio.

#### 4. FOR ENROLLMENTS OF MORE THAN TWELVE MONTHS:

A student who cancels during the first twelve months is refunded all monies in advance for the second twelve months or part thereof.

*B. ALL REFUNDS ARE MADE WITHIN FORTY-FIVE (45) DAYS.* Although not required, written notice of cancellation is recommended. Refunds are computed as of the last date of recorded attendance. The failure of a student to immediately notify the school director in writing of the student's intent to withdraw may delay a refund of tuition to the student pursuant to Section 5002(3) of the Education Law.

C. Diplomas, Certificates of Completion and academic transcripts are not issued until the student meets all requirements and monetary obligations.

D. Students dismissed for improper conduct, poor attendance, failing progress, or tuition arrears are not relieved of financial obligations as specified in this Enrollment Agreement.

#### ***Enrollment Agreement***

Each student who registers at the Institute is given an enrollment agreement which indicates: course of study, course length, tuition rate per class, total tuition required, payment plan (first payment and weekly payment), starting and ending dates of the course, and the refund policy. This enrollment agreement is signed by authorized personnel of the Institute and by the student. One copy is made a permanent part of the student's file. No promises other than those so specified in this agreement are binding.

#### ***Tuition***

The tuition and fees are specified on the supplement enclosed with this catalog.

## **VI. ACADEMIC POLICIES**



#### ***Office Hours***

The Institute's offices at 240 West 35 Street, Manhattan, Second Floor, are open for information, registration, and conferences from 9 a.m. to 9 p.m., Monday through Friday inclusive, except on school holidays.

#### ***Student Program Card***

Each student receives a program card on the first day of classes. The program card indicates hours, subjects, and room assignments. It must be presented to each teacher for admission to class. Students should retain the program card at all times.

#### ***Program Changes***

Each student's program is the result of consultation at the time of registration. Program changes can be made only after further discussion with administrative personnel and a complete understanding of the reason for the requested change and the effect the change will have on the student's scholastic goals.

#### ***Attendance And Tardiness***

Regular attendance is required for all classes. Daily attendance is taken in all classes and all absence and tardiness is reported to the office. No credit for attendance will be given for a class session in which a "class cut" occurs.

**Absences.** When a student must be absent from classes, the student must:

- telephone the office at (212) 840-7111 to report the reason for absence and
- provide the Institute with a written explanation for the absence upon returning to classes.

**Tardiness.** Promptness in school is important preparation for the business world. Students must report to classes on time. Three class late arrivals of more than five minutes are charged as one absence. Faculty members may exclude students chronically arriving more than fifteen minutes late without good cause, should this condition result in disruption to the other students or the teacher.

Students arriving more than thirty minutes late do not receive credit for the class hour.

**Notification of Absence.** When a student is absent more than five times in a calendar month, a notice is sent to the student's email or home directing him/her to meet with school personnel and advising of possible loss of certificate/diploma eligibility or loss of student visa status.

A student who is absent for more than 15% of the total course time and who has not maintained satisfactory grades or academic progress will be dismissed. Students dismissed for any reason are not relieved of the monetary obligations stated in the Enrollment Agreement.

### ***F-1 Student Visa SEVIS Record***

The Institute's designated school official must terminate the SEVIS (Student and Exchange Visitor Information System) record of any F-1 student visa student who does not comply with the SEVP (Student and Exchange Visitor Program) full course of study requirement or where a pattern of non-attendance is evident.

### ***Textbooks And Materials***

Students may not attend classes without the required textbooks and materials. Credit is not extended for the purchase of textbooks or materials in the Institute's Bookstore. Students are not required to buy their books through the school bookstore. They are encouraged to seek low-cost online alternatives for new or used books and to use the Student Club "Book Exchange" to contact other students wishing to buy or sell their unwanted used textbooks.

### ***"Fair Use" Duplication of Copyrighted Classroom Material Guidelines***

The Spanish-American Institute requires faculty to observe the legal restrictions on duplication of copyrighted material in the United States Copyright Law. The duplication of multiple copies of print and graphic material for classroom use is restricted by the Law's "fair use" guidelines.

While the Law does not provide an exact measure of the amount of copyrighted material that a faculty member may duplicate without first seeking permission from or making payment to the author or publisher of the copyrighted material, it does provide guidelines restricting the nature and amount of material that may be duplicated and the amount that may be duplicated in any time period.

The Spanish-American Institute strives to provide teachers and students with comprehensive copyrighted required textbook and workbook materials for all courses. Faculty are encouraged to maximize the use of school textbooks and workbooks in their classes and to use additional material only when absolutely necessary. In those instances, the Spanish-American Institute has adopted the following "fair use" requirements for multi-copying of copyrighted material, consistent with standards used at many other postsecondary institutions.

Faculty members are **required** to observe the following school copyright policy, whether the material for classroom use is being duplicated by the Spanish-American Institute or by a source outside the school:

1. "Consumable works" such as workbook material may never be copied for classroom use.
2. The same item shall not be duplicated over and over again.
3. No more than 10% or 1,000 words, whichever is less, of a longer prose work may be duplicated for classroom use.
4. For all other material, consult with the Dean of Academic Affairs before duplicating multiple copies.

### ***Homework***

Homework is assigned regularly and is an important part of the learning process. All students are expected to complete assignments to the best of their ability and to present them in class on the due day.

### ***Make-Up Assignments / Tests / Academic Dismissal***

Students must satisfactorily complete an equal amount of make-up work for the time they are absent. Students who require more than eight days beyond the scheduled course completion date may be charged at the hourly rate for the additional time. A student who misses 15% of the total course time and who has not maintained satisfactory grades or academic progress will be dismissed.

**Make-up Examinations.** When a student does not take an examination for valid reasons, a make-up examination is required within ten days of the student's return to classes. The instructor schedules such make-up examinations.

**Incomplete Status.** A student who has received an "INC" for whatever reason must rectify this deficiency within ten days or receive a failing grade for the subject in which an incomplete was given.

## ***Dress Code***

The Institute does not have a uniform or standard dress requirement. Students may dress in casual, comfortable attire; they are expected to be neat and presentable at all times. Their manner and dress should reflect credit on themselves and on the Institute.

## ***Leave of Absence***

A student who requires a leave of absence must submit the request in writing to the office. If the leave is granted, the student will be permitted to suspend his/her course of study for a period not to exceed three months. The student may then resume without loss of time or tuition paid.

When a student returns from an approved leave of absence, the student shall be placed in the instructional program at the point commensurate with the skill level retained by the student at the time of his or her return. For leaves of less than 30 calendar days, there will be a counseling session to determine the student's retention level. For leaves in excess of thirty days, in addition to the counseling session, faculty members will assess the student's retention level and provide instruction accordingly.

## ***Grading Scale***

Student grades are assigned as follows:

Table 1 Grading Scale

LETTER GRADE	POINTS	GRADE RANGE	MEANING
A	4.0	90-100%	honors
B+	3.5	85-89%	excellent
B	3.0	80-84%	above average
C+	2.5	75-79%	average
C	2.0	70-74%	satisfactory
D	1.5	65-69%	passing
F	0.	60-64%	failing
W	-		withdrawal
I	0.		incomplete
N	-		new student
Ab	0		Exam Absence

## ***Maintaining Satisfactory Progress***

**Academic Progress.** In order to maintain good academic standing, a student must achieve a grade of at least 65% and attain a cumulative average of not less than 70% (Grade Point Average: 2.0). There are six grade reporting periods in each calendar year. The Institute assesses satisfactory progress for students after each bimonthly exam week.

Students not maintaining satisfactory academic progress for two consecutive bimonthly grading periods will be placed on academic warning.

The student must obtain a 2.0 Grade Point Average on the next bimonthly grading period or the student will be placed on probation.

A student on academic probation is considered to be making satisfactory progress during the probationary period.

At graduation the minimum grade point average must be 2.0. Evaluations are conducted after each bimonthly exam week.

**Incomplete Status.** A student who has received an "INC" (incomplete) for whatever reason must rectify his/her deficiency within ten (10) days or be considered failing in his/her grade for the course in which an incomplete "INC" was given.

**Repeated Courses Grades.** Grades earned for courses repeated due to failure to obtain a passing grade replace the failing grade in computations of satisfactory academic progress.

**Pass/Fail Grades.** The Institute does not use pass/fail grades. See Grading Scale on page 48 for an explanation of the Institute's grading scale.



**Non-Credit, Remedial Coursework.** Non-credit remedial classes are not available. Students requiring extra help or tutoring should contact the Dean of Students for assistance. Hours beyond the normal program elective and required hours and are not included in the computation of satisfactory academic progress.

### ***Effect on Satisfactory Academic Progress for Transfer Hours***

Only student's Spanish-American Institute course work average is assessed. Transfer course grades do not impact the student's Institute GPA. Transfer courses accepted by the Institute count as attempted and earned courses for the quantitative measure. That is to say, courses completed at another school and accepted by the Institute are excluded from the GPA calculation, but included in the completion rate and maximum time frame calculations.

### ***Effect on Satisfactory Academic Progress of Additional Credential***

A student who seeks to earn an additional credential must complete the required courses for each of the programs within the timeframe of the longer program. In addition the student must meet all quantitative and qualitative standards for each of the programs.

### ***Grade Reporting Procedures***

Students are tested regularly and must achieve a satisfactory grade in order to maintain good standing. Examinations are given bi-monthly to measure student progress. All grades are entered on official grade sheets by the teacher and submitted to the office for entry into individual student records. A Progress Report (report card letters) is e-mailed (or individually printer upon request) to each student after each bi-monthly examination period. Final grades for each course in a program are calculated by taking a straight average of each of the weekly grades recorded by instructors on the weekly attendance rosters. Course final grades are weighted by course hours when calculating grade point averages for programs.

### ***Academic Warning and Probation***

Students who receive a cumulative average below 70% (Grade Point Average of 2.0) for two consecutive bi-monthly grading periods will be placed on academic warning for the next two bi-monthly grading periods and are expected to improve their grades in the next examination periods. Such students will be extended guidance, extra classes, and homework in an effort to improve upon their performance.

### ***Interpretation of the Achievement Scale***

Interpretation of the Achievement Scale may be reviewed on the school website as [Interpretation of Placement Scale with Proficiency Descriptors](#) in html format at:

<http://sai.nyc/syllabi/ProficiencyDescriptorsForESL-PlusCourseOfStudy.html> or in pdf format at:

<http://sai.nyc/syllabi/ProficiencyDescriptorsForESL-PlusCourseOfStudy.pdf>

### ***Assessment Procedures Used To Determine ESL Placement***

After enrolling in the ESL-Plus Course of Study and before starting classes, student are individually scheduled for ESL level placement by completion of an internationally recognized and normed placement test to determine their current abilities. The CELSA Test (Combined English Language Skills Assessment) is a 45-minute test consisting of 75 questions. It is designed to place ESL (English as a Second Language) students in the appropriate ESL classes.

### ***Assessment Procedures To Determine ESL Level-To-Level Progression***

Students begin studies at the level corresponding to their current language abilities as determined by a placement test and remain in the assigned level for the number of hours indicated unless the instructor recommends a higher level sooner or later. Teacher recommendations are based on student attainment of the course terminal objectives in less than (or more than) the normal number of hours. Students may complete less than (or more than) course hours of work in listed individual course hours if teachers recommend advancement upon completion of terminal objectives prior to (or after) completion of the individual course hours. Slower students must complete 65% of the course hour terminal objectives to maintain satisfactory academic progress. Therefore, the number of hours spent in each course will vary according to course placement at registration and individual achievement of terminal course objectives.

## ***Assessment Procedures To Determine Completion Of ESL-Plus***

To meet the Institute's ESL-Plus Course of Study completion requirements, the student must:

1. pass all courses in the Course of Study with a grade of 65% or higher,
2. have a cumulative average of at least 70% (Grade Point Average: 2.0),
3. have met all financial obligations to the Institute.

Students are tested regularly and must achieve a satisfactory grade in order to maintain good standing. Examinations are given bi-monthly to measure student progress. Bi-monthly exams are keyed to student learning outcomes in each course syllabi. All grades are entered on official grade sheets by the teacher and submitted to the office for entry into individual permanent student records. A Progress Report (report card letter) is e-mailed (or individually printed upon request) to each student after each bi-monthly examination period. Final grades for each course in the ESL-Plus Course of Study are calculated by taking a straight average of each of the bi-monthly grades recorded by instructors on the bi-monthly attendance/grade rosters. Course final grades are weighted by course hours when calculating grade point averages for course of study. Alternately students may demonstrate mastery of terminal course objectives at any time by scoring 80% or higher on the corresponding MyLab Exit Test.

## ***Bi-Monthly Individual Reports of Results***

Students are informed of their individual progress by a Progress Report (report card letter) that is e-mailed (or individually printed upon request) to each student after each bi-monthly examination period.

## ***Appeal Procedures***

### **Academic Warning / Probation Appeal Procedure**

Students may provide information about mitigating or special circumstances relating to academic probation within three weeks of being placed on academic probation. The Academic Warning and Probation Appeals Committee consisting of the Institute's President and Deans will evaluate this information. A determination will be made within ten (10) days of receipt of the student's written appeal request.

### **Grade Appeals Procedures**

Students may provide information about mitigating or special circumstances relating to grades within three weeks of receiving the grade. Grade Appeals Committee consisting of the Institute's President or his designated representative Dean, Chair or senior faculty member will evaluate this information. A determination will be made within ten (10) days of receipt of the student's written appeal request.

## ***Course Certificates of Completion***

To meet the Institute's graduation requirements for a Certificate of Completion in a course, the student must:

- have a minimum passing grade of 65% for the course,
- meet the skills requirement of the course, and
- have met all financial obligations to the Institute.

## ***Academic Year***

Since the Institute employs the continuous enrollment method, there are no specific "registration dates." New students are admitted to classes on the second Monday of each month. There are, therefore, 12 start dates a year. All course of study are designed so that students are able to progress systematically through each lesson. Students are tested regularly. Students must pass required tests in order to maintain good academic standing.

### ***Academic Calendar***

The Institute is open year-round except for the following holidays. The holidays listed below correspond to those observed by New York State and Federal offices. The Institute is also closed for the period between Christmas Eve and New Year's Day.

Martin Luther King Day
Presidents' Day
Good Friday
Memorial Day
Juneteenth
Independence Day
Labor Day
Columbus Day
Election Day
Veteran's Day
Thanksgiving (2 days)
Year End Vacation Week

### ***Class Hour Schedule***

<b><i>9:15 a.m.</i></b>	<b><i>to</i></b>	<b><i>10:05 a.m.</i></b>
<b><i>10:10 a.m.</i></b>	<b><i>to</i></b>	<b><i>11:00 a.m.</i></b>
<b><i>11:05 a.m.</i></b>	<b><i>to</i></b>	<b><i>11:55 a.m.</i></b>
<b><i>12:00 noon</i></b>	<b><i>to</i></b>	<b><i>12:50 p.m.</i></b>
<b><i>1:00 p.m.</i></b>	<b><i>to</i></b>	<b><i>1:50 p.m.</i></b>
<b><i>1:55 p.m.</i></b>	<b><i>to</i></b>	<b><i>2:45 p.m.</i></b>
<b><i>2:50 p.m.</i></b>	<b><i>to</i></b>	<b><i>3:40 p.m.</i></b>
<b><i>4:00 p.m.</i></b>	<b><i>to</i></b>	<b><i>4:50 p.m.</i></b>
<b><i>5:00 p.m.</i></b>	<b><i>to</i></b>	<b><i>5:50 p.m.</i></b>
<b><i>5:51 p.m.</i></b>	<b><i>to</i></b>	<b><i>6:41 p.m.</i></b>
<b><i>6:42 p.m.</i></b>	<b><i>to</i></b>	<b><i>7:32 p.m.</i></b>
<b><i>7:33 p.m.</i></b>	<b><i>to</i></b>	<b><i>8:23 p.m.</i></b>
<b><i>8:24 p.m.</i></b>	<b><i>to</i></b>	<b><i>9:14 p.m.</i></b>

### ***Instructional Hour***

The Institute measures course work in units called instructional hours. An instructional hour equals fifty (50) minutes of classroom instruction.

Prospective students and faculty may obtain course syllabi directly from the Institute's web site at: [www.sai2000.org](http://www.sai2000.org). Students without Internet access may request print copies from the Institute's administrative staff.

**Course of Study Requirements for F-1 ESL-Plus Student Visa Applicants**

Number	Course Titles	Hours	Sessions (all sessions are 20 class-hours per week)	Tuition per Session
<b>SPECIAL NOTE:</b> any combination of 3, 6, 9 or 12 month sessions totaling 24 months is permitted (exclusive of annual vacations.)				
Varies with collaborative course selection	Individual educationally appropriate selection from Course List which follows immediately below	1920	2 sessions of 12 months each	\$2880 per session
			4 sessions of 6 months each	\$1440 per session
			8 sessions of 3 months each	\$960 per session

**Course Information Effective September 9, 2014 Through Fall 2024**

Session Duration	Total Tuition	Payment Plan
3 months	US\$ 960	\$560 due at enrollment balance \$400 first day of class (or in special circumstances \$50 per week after class start)
6 months	US\$ 1440	\$560 due at enrollment balance \$880 first day of class (or in special circumstances \$50 per week after class start)
9 months	US\$ 2160	\$560 due at enrollment balance \$50 per week after class start
12 months	US\$ 2880	\$560 due at enrollment balance \$52 per week after class start

**Ask For Special "Summer" Upgrade - All Year Long!**

Because "the sun always shines" for students at Spanish-American Institute, you can ask for a Special "Summer" Upgrade - - - *any time during the year* - - - whenever you enroll and continue uninterrupted for another session!

- upgrade from 3 months / 4 hours to 6 months for just \$480!
- upgrade from 6 months / 4 hours to 9 months for \$720
- upgrade from 9 months / 4 hours to 12 months for \$720



## List of Courses

Number	Course Titles	Course Hour Cycles*	Tuition	Page
<b>200</b>	<b>English For Keyboarding for Information Processing</b>	<b>48</b>	<b>192</b>	<b>16</b>
201	English For Keyboarding (Basic Course)	120	480	17
202	English For Keyboarding (Advanced Course)	120	480	17
203	English For Keyboarding (Expert Course)	80	320	18
235	English For Introduction to Microsoft Words	80	320	19
<b>300</b>	<b>English For Business Management</b>	<b>120</b>	<b>480</b>	<b>19</b>
302	English For Accounting (First Course)	120	480	20
303	English For Accounting (Intermediate Course)	120	480	21
304	English For Accounting (Advanced I)	60	240	22
305	English For Accounting (Advanced II)	60	240	22
404	Business Communication	72	288	23
500	English Literacy	120	480	24
<b>501</b>	<b>English As A Second Language (Levels I-VI each)</b>	<b>120</b>	<b>480</b>	<b>24</b>
502	Business English	120	480	30
503	Advanced Reading And Writing	120	480	31
604	English For TASC Preparation (formerly High School Equivalency Diploma Preparation) (240 hours)	240	960	34
605	English For Pre-GED Foundation for GED Preparation	80	320	33
<b>610</b>	<b>English For TOEFL Exam Preparation</b>	<b>80</b>	<b>320</b>	<b>34</b>
950	English For Using Excel	80	320	36
955	English For Using the Internet	80	320	37
965	English For Using Microsoft PowerPoint	80	320	38
<b>975</b>	<b>English For Using Adobe PhotoShop</b>	<b>160</b>	<b>640</b>	<b>39</b>
990	English For Introduction to Mac	80	320	<b>40</b>
995	English For Switching to Mac	80	320	<b>41</b>
1000	English For Using Apple iMovie	80	320	<b>41</b>

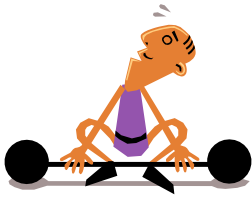
### \*Method of Instruction

- The Institute is a clock-hour, continuous enrollment institution. All courses and programs are designed so that students can enroll in any class at any time during the year and progress systematically through each class. Students are tested regularly and must pass required tests to maintain good academic standing.
- New students are admitted to classes on the second Monday of each month. When the second Monday is a school holiday, new students are admitted on Tuesday. Exceptions may be made upon consultation with the Dean of Admissions.
- All courses are designed to be repeated in multiple, continuous, simultaneous course-hour cycles toward proficiency progression of course stated outcomes & student personal proficiency goals as determined in consultation with Student Services Associates.

### Information Regarding Maximum Number Of Times A Class Can Be Repeated

Students who enroll in the ESL-Plus Course of Study move their individual levels or courses at their own rate. As long as a student is in good academic standing (as defined in our student policies), a student may be in a given level for an variable amount of time.

## VII. Student Club Notes



- **Free and Low Cost Gyms, Health Clubs and Pools**

Student Club Notes Spanish-American Institute

**Free and Low Cost Gyms, Health Clubs and Pools**

**NYC Department of Parks Recreation Centers** [www.nycgovparks.org](http://www.nycgovparks.org)

**Recreation Centers:** The NYC Department of Parks has many Recreation Centers throughout New York City. Recreation Centers offer a wide range of **free** and **membership** programs and services. Some have indoor swimming pools. Almost all have weight rooms, basketball courts, dance studios, boxing rings, art studios, game rooms, etc.

All Recreation Centers offer a wide range of programs such as aerobics, dance, tai chi, fencing, computer classes, and art. Many programs are free and open to the general public but many require membership.

You do not need to be a New York City resident to use a Recreation Center. You may use your annual membership at any and all Centers. Use one near the Spanish-American Institute and then use one near your home.

**Costs:** **Free** and **membership** programs. Standard **annual** membership is **\$50** for Recreation Centers and **\$75** for Recreation Centers with pools. (Do you know anyone 55 and older? The senior membership is only **\$10** a year.)

Standard membership provides scheduled access to the gym, pool, and other facilities. Instructor-led courses such as aerobics, martial arts, music, or yoga **may** require an additional fee.

**Membership and Program Information:** Go to the [www.nycgovparks.org](http://www.nycgovparks.org) home page. On the “Facilities” menu, click on “Recreation Centers.” On the “Recreation Centers” page, you will find information about membership and fees. You will also see links to Recreation Facilities by borough (Bronx, Brooklyn, Manhattan, Queens, and Staten Island.)

On the “Facilities” menu, you may also want to check out other NYC Department of Parks facilities such as beaches, ice skating rinks, nature centers, running tracks, soccer fields, etc.

**Recreation Centers:** There are several Parks Department Recreation Centers in **each** borough. After you go to the “Recreation Centers” page and click on a borough, you will find a list of the centers in that borough with their addresses, phone numbers, and web links. The list will look like that for Manhattan below. Click on the link for a particular Center to learn more about its services, schedules, and programs.

**Manhattan Recreation Centers:** The following 15 Recreation Centers are in Manhattan. Those with asterisks (\*) have indoor swimming pools.

### Manhattan Recreation Centers

<p><a href="#">Alfred E. Smith Recreation Center</a>  <b>80 Catherine Street at Cherry Street</b> (212) 285-0300            *<a href="#">Asser Levy Recreation Center</a> *  <b>392 Asser Levy Pl. at East 23rd St.</b> (212) 447-2020            *<a href="#">Tony Dapolito Recreation Center</a> *  <b>1 Clarkson St. &amp; 7th Ave. South</b> (212) 242-5228</p>	<p><a href="#">Pelham Fritz Recreation Center</a>  <b>18 Mt. Morris Park West at W 122 St</b> (212) 860-1380  <a href="#">Thomas Jefferson Recreation Center</a> (CD)  <b>2180 1st Ave. at E. 112th St.</b> (212) 860-1383            *<a href="#">Recreation Center 59</a> *  <b>West 59th St. between 10th and 11th Aves.</b>            (212) 397-3159 Near Spanish-American Institute  <a href="#">J. Hood Wright Recreation Center</a>  <b>351 Fort Washington Ave. at 174th St.</b>            (212) 927-1514  <a href="#">Highbridge</a>  <b>2301 Amsterdam Avenue at West 173rd St.</b>            (212) 927-2012  <a href="#">Morningside Park</a> (Satellite)  <b>410 W. 123rd St. &amp; Morningside Drive</b>  <a href="http://www.nycgovparks.org/sub_things_to_do/recreation_centers/rc_morningside.html">http://www.nycgovparks.org/sub_things_to_do/recreation_centers/rc_morningside.html</a>  <a href="#">North Meadow</a> (CBO)  <b>Central Park, Mid-Park at 97 St.</b></p>
<p>*<a href="#">Chelsea Recreation Center</a>  <b>430 West 25th Street (between 9th &amp; 10th Avenue)</b>            (212) 255-3705  <a href="#">Recreation Center 54</a>  <b>348 East 54th St. between 1st and 2nd Aves.</b>            (212) 754-5411  <a href="#">Hamilton Fish Recreation Center</a> (CD)  <b>128 Pitt Street at Houston Street</b> (212) 387-7687</p>	
<p>*<a href="#">Hansborough Recreation Center</a>  <b>35 West 134th St. between Lenox and Fifth Aves.</b> (212) 234-9603  <a href="#">Jackie Robinson Recreation Center</a>  <b>89 Bradhurst Avenue between 146th and 147th Streets</b> (212) 234-9606</p>	



## Student Club Notes **Spanish-American Institute**

### *Free Flu, Tetanus, Pneumococcal, Hepatitis B Shots* New York City Department of Health Walk-In Clinics

Health Department walk-in immunization clinics provide immunizations and vaccines for adults, including hepatitis B, tetanus, and pneumococcal vaccines. Influenza vaccine is offered seasonally.

Although flu vaccine is generally provided at the clinics listed below, students are encouraged to check the Institute's student bulletin boards for current information

No appointment is necessary; persons will be seen on a first come first served basis.

Call the Health Department's Immunization Hotline **311** for information about available vaccination services.

CLINIC	POPULATION SERVED	DAYS/TIMES OF OPERATION	TRAVEL DIRECTIONS
<b>Tremont Health Center</b> 1826 Arthur Avenue - 1 <sup>st</sup> Fl. <b>Bronx</b> , New York Between: Cross Bronx Expressway & Tremont Ave.	Children $\geq$ 4 years of age and Adults	Mon, Tues, Thurs and Fri 8:30am -2:30pm	#2 or #5 train to East Tremont Ave-West Farms Square, or # 4 train to Burnside Ave, then #40 or #42 bus to Arthur Ave
<b>Chelsea Health Center</b> 303 Ninth Avenue - 1 <sup>st</sup> Fl. <b>Manhattan</b> , New York Between: 27 <sup>th</sup> & 28 <sup>th</sup> Sts.	Children $\geq$ 4 years of age and Adults	Mon thru Fri 8:30am - 2:30pm	C or E train to West 23 <sup>rd</sup> Street or #1 or #9 train to West 28 <sup>th</sup> Street
<b>Corona Health Center</b> 34-33 Junction Blvd - Basement Level <b>Queens</b> , New York Between: 34 <sup>th</sup> Ave. & 34 <sup>th</sup> Rd.	Adults	Tues Wed Thurs 8:30am - 2:30pm	#7 train to Junction Boulevard
<b>Homecrest Health Center</b> 1601 Avenue S - 1 <sup>st</sup> Fl <b>Brooklyn</b> , New York Between: East 16 <sup>th</sup> & E 17th Sts.	Children $\geq$ 4 years of age and Adults	Mon Wed Fri 8:30am - 2:30pm	B or Q train to Kings Highway, or Q train to Ave. U
<b>Richmond Health Center</b> 51 Stuyvesant Place - 1 <sup>st</sup> floor <b>Staten Island</b> , New York Between: Wall St & Richmond Terrace	Adults (Flu and Pneumonia Shots)	Monday 8:30am - 2:30pm	Near the Staten Island Ferry Terminal



*“English through the Arts”* ~ Request for Proposals

## Student Club Request for Proposals



The Founders

*“English through the Arts”*

Special Events Center is being made available for exhibits.

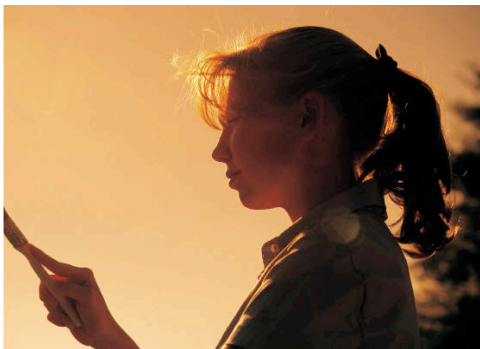
Students and faculty are invited to submit proposals for use of the space to feature their accomplishments in such areas as music, poetry, song, dance, painting, photography, drawing, and



illustration.

Come see me in Room One.  
Help us feature the very special talents of our very special students and teachers and make this year the most memorable yet!

Dante V. Ferraro, President  
Paul Schiffman, Dean of Students





# Bring a Friend Get Double Time!

Enroll for  
4 classes a day and  
**ADD 4 MORE classes daily**  
*(8 classes daily Mon thu Fri!)*  
at NO EXTRA COST!

English ~ Computer ~ Accounting

Enroll Now for  
DOUBLE TIME  
Bring a Friend and  
Get 4 more classes  
DAILY FOR  
YOURSELF too!

## Super Intensive English Language *and more!*

- **NEW STUDENTS:**  
Enroll now for any 4 classes a day of English or Computer or Accounting and add any other 4 classes a day *at no extra cost.*

**YES!** Call me with more information.

No, not right now, but keep me in mind for future courses. My E-Mail: \_\_\_\_\_ @ \_\_\_\_\_

Name \_\_\_\_\_

Address \_\_\_\_\_

City \_\_\_\_\_ State \_\_\_\_\_ Zip \_\_\_\_\_ Phone \_\_\_\_\_



*Spanish-American Institute*

240 West 35 Street  
Manhattan, New York 10001

voice: 212.840.7111 fax: 646.766.0302

info@sai.nyc www.sai.nyc



**Photo 1** Founders David Schiffman (left) and Frank J. Ferraro (right) with graduates c. 1965

